

FIBRONECTIN (1E2) MOUSE MAB

Cat.#: N261249

Product Name: Anti-Fibronectin (1E2) Mouse Monoclonal Antibody

Synonyms: FN1; FN; Fibronectin; FN; Cold-insoluble globulin; CIG

UNIPROT ID: P02751

Background: FN1 Fibronectins bind cell surfaces and various compounds including collagen, fibrin, heparin, DNA, and actin. Fibronectins are involved in cell adhesion, cell motility, opsonization, wound healing, and maintenance of cell shape. Mostly heterodimers or multimers of alternatively spliced variants, connected by 2 disulfide bonds near the carboxyl ends; to a lesser extent homodimers.

Immunogen: Synthetic Peptide of Fibronectin

Applications: WB,IHC-F,IHC-P,ICC/IF

Recommended Dilutions: WB: 1/500-1/1000 IHC: 1/50-1/100 IF: 1/50-1/200

Host Species: Mouse

Clonality: Mouse Monoclonal

Clone ID: 1E2-6G1-3E10

MW: Calculated MW: 272 kDa; Observed MW: 285 kDa

Isotype: IgG1

Purification: Affinity Purified

Species Reactivity: Human,Mouse,Rat

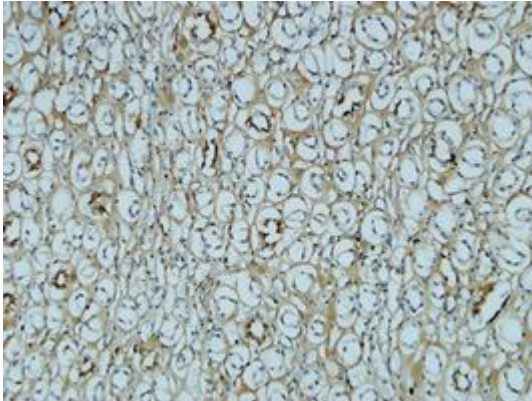
Conjugation: Unconjugated

Modification: Unmodified

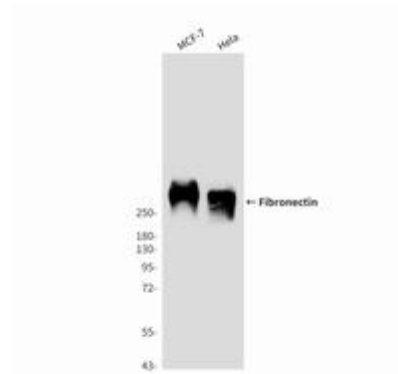
Constituents: PBS (without Mg²⁺ and Ca²⁺), pH 7.3 containing 50% glycerol, 0.5% BSA and 0.02% sodium azide

Research Areas: Cardiovascular

Storage & Shipping: Store at -20°C. Avoid repeated freezing and thawing



Immunohistochemistry analysis of paraffin-embedded Human kidney using Fibronectin antibody. High-pressure and temperature Sodium Citrate pH 6.0 was used for antigen retrieval.



Western blot analysis of Fibronectin (1E2) in MCF-7 and HeLa lysates using Fibronectin antibody.