

## FIBIN RABBIT PAB

**Cat.#:** S219417

**Product Name:** Anti-FIBIN Rabbit Polyclonal Antibody

**Synonyms:**

**UNIPROT ID:** Q8TAL6 (Gene Accession - BC026873 )

**Background:** The function of this protein remains unknown.

**Immunogen:** Fusion protein of human FIBIN

**Applications:** ELISA, IHC

**Recommended Dilutions:** IHC: 150-300; ELISA: 5000-10000

**Host Species:** Rabbit

**Clonality:** Rabbit Polyclonal

**Isotype:** Immunogen-specific rabbit IgG

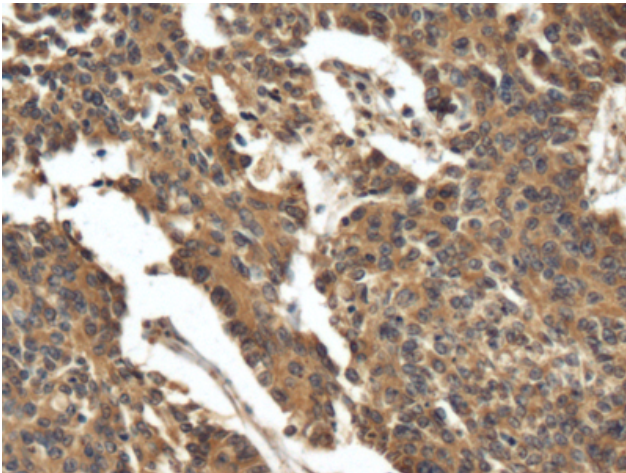
**Purification:** Antigen affinity purification

**Species Reactivity:** Human, Mouse, Rat

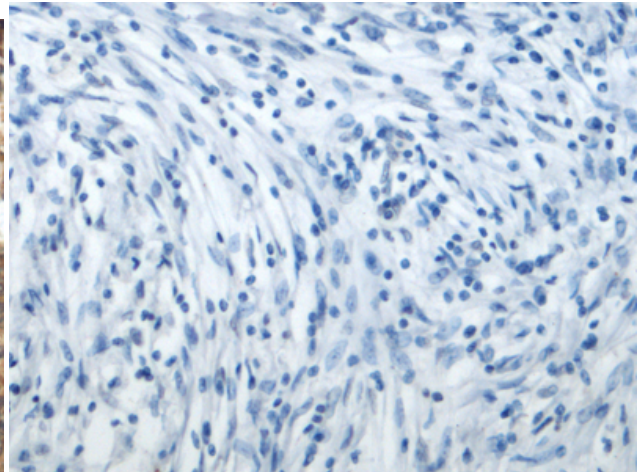
**Constituents:** PBS (without Mg<sup>2+</sup> and Ca<sup>2+</sup>), pH 7.4, 150 mM NaCl, 0.05% Sodium Azide and 40% glycerol

**Research Areas:** Cell Biology

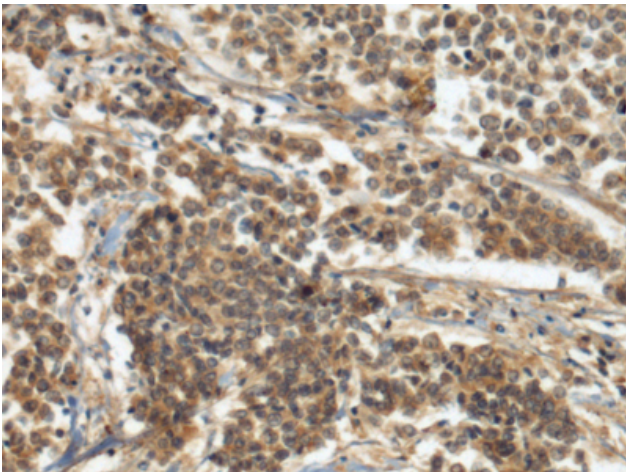
**Storage & Shipping:** Store at -20°C. Avoid repeated freezing and thawing



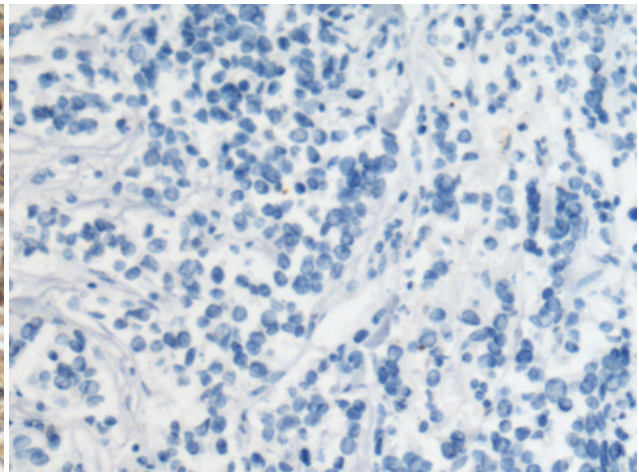
Immunohistochemistry analysis of paraffin embedded Human colorectal cancer tissue using 219417 (FIBIN Antibody) at a dilution of 1/120 (Cytoplasm).



In comparison with the IHC on the left, the same paraffin-embedded Human colorectal cancer tissue is first treated with the fusion protein and then with 219417 (Anti-FIBIN Antibody) at dilution 1/120.



The image on the left is immunohistochemistry of paraffin-embedded Human breast cancer tissue using 219417 (Anti-FIBIN Antibody) at a dilution of 1/120.



In comparison with the IHC on the left, the same paraffin-embedded Human breast cancer tissue is first treated with fusion protein and then with D226835 (Anti-FIBIN Antibody) at dilution 1/120.