

## FHL1 RABBIT MAB

**Cat.#:** N263332

**Product Name:** Anti-FHL1 Rabbit Monoclonal Antibody

**Synonyms:** FHL1; FHL1A; FHL1B; FLH1A; RBMX1A; RBMX1B; SLIM1; SLIMMER; XMPMA

**UNIPROT ID:** Q13642

**Background:** May have an involvement in muscle development or hypertrophy.

**Immunogen:** Recombinant protein of human FHL1

**Applications:** WB,IHC-P,IP

**Recommended Dilutions:** WB: 1/500-1/1000 IHC: 1/50-1/100 IP: 1/20

**Host Species:** Rabbit

**Clonality:** Rabbit Monoclonal

**Clone ID:** R03-2H8

**MW:** Calculated MW: 36 kDa; Observed MW: 36 kDa

**Isotype:** IgG

**Purification:** Affinity Purified

**Species Reactivity:** Human

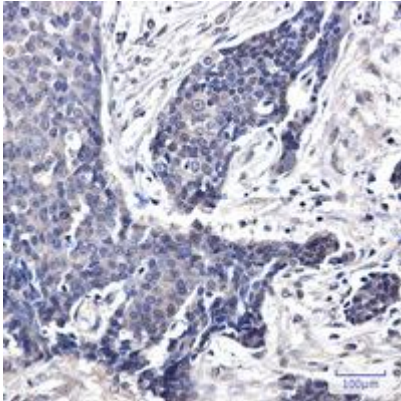
**Conjugation:** Unconjugated

**Modification:** Unmodified

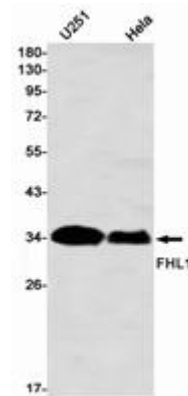
**Constituents:** PBS (without Mg<sup>2+</sup> and Ca<sup>2+</sup>), pH 7.3 containing 50% glycerol, 0.5% BSA and 0.02% sodium azide

**Research Areas:** Epigenetics and Nuclear Signaling

**Storage & Shipping:** Store at -20°C. Avoid repeated freezing and thawing



Immunohistochemistry analysis of paraffin-embedded Human breast cancer using FHL1 antibody. High-pressure and temperature Sodium Citrate pH 6.0 was used for antigen retrieval.



Western blot analysis of FHL1 in HeLa, U251 lysates using FHL1 antibody.