

## FGL1 RABBIT PAB

**Cat.#:** S216511

**Product Name:** Anti-FGL1 Rabbit Polyclonal Antibody

**Synonyms:** HPS; HFREP1; HP-041; LFIRE1; LFIRE-1

**UNIPROT ID:** Q08830 (Gene Accession - BC007047 )

**Background:** Fibrinogen-like 1 is a member of the fibrinogen family. This protein is homologous to the carboxy terminus of the fibrinogen beta- and gamma- subunits which contains the four conserved cysteines of fibrinogens and fibrinogen related proteins. However, this protein lacks the platelet-binding site, cross-linking region and a thrombin-sensitive site which are necessary for fibrin clot formation. This protein may play a role in the development of hepatocellular carcinomas. Four alternatively spliced transcript variants encoding the same protein exist for this gene.

**Immunogen:** Fusion protein of human FGL1

**Applications:** ELISA, WB, IHC

**Recommended Dilutions:** IHC: 50-200;WB: 500-2000;ELISA: 5000-10000

**Host Species:** Rabbit

**Clonality:** Rabbit Polyclonal

**Isotype:** Immunogen-specific rabbit IgG

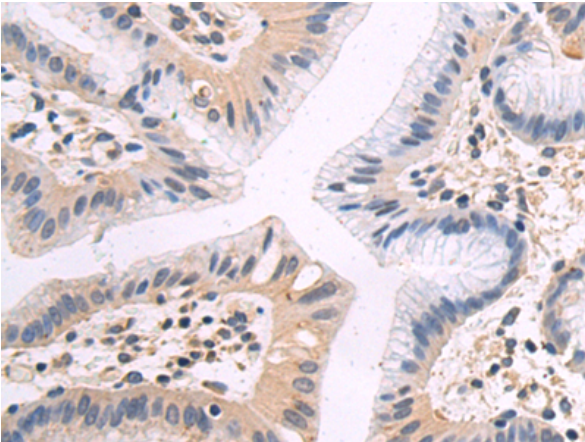
**Purification:** Antigen affinity purification

**Species Reactivity:** Human, Mouse, Rat

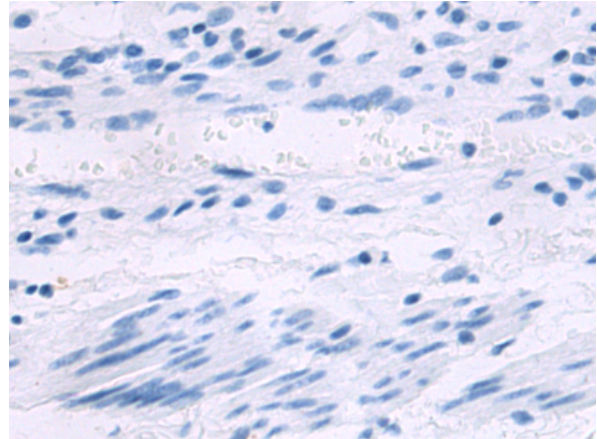
**Constituents:** PBS (without Mg<sup>2+</sup> and Ca<sup>2+</sup>), pH 7.4, 150 mM NaCl, 0.05% Sodium Azide and 40% glycerol

**Research Areas:** Cardiovascular

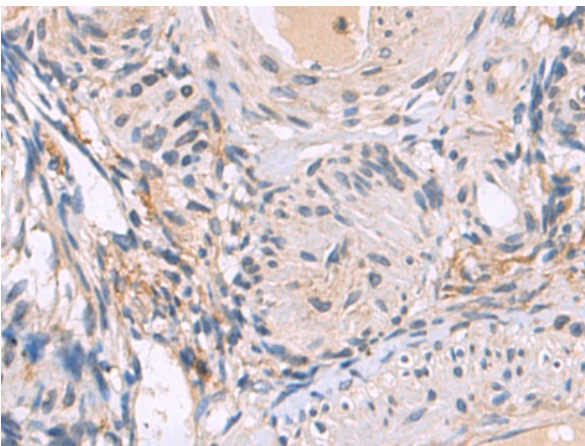
**Storage & Shipping:** Store at -20°C. Avoid repeated freezing and thawing



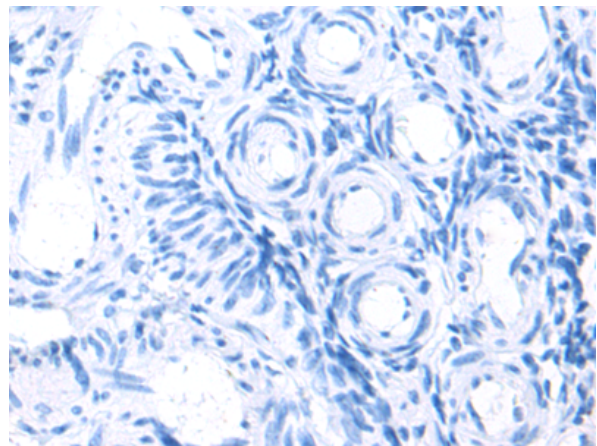
Immunohistochemistry analysis of paraffin embedded Human esophagus cancer tissue using 216511(FGL1 Antibody) at a dilution of 1/55(Secreted).



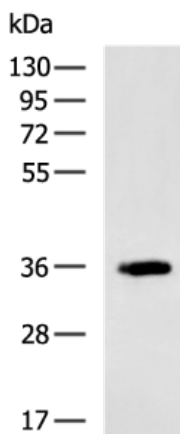
In comparison with the IHC on the left, the same paraffin-embedded Human esophagus cancer tissue is first treated with the fusion protein and then with 216511(Anti-FGL1 Antibody) at dilution 1/55.



The image on the left is immunohistochemistry of paraffin-embedded Human breast cancer tissue using 216511(Anti-FGL1 Antibody) at a dilution of 1/55.



In comparison with the IHC on the left, the same paraffin-embedded Human breast cancer tissue is first treated with fusion protein and then with D220629(Anti-FGL1 Antibody) at dilution 1/55.



Gel: 8%SDS-PAGE, Lysate: 40 µg;  
Lane: LO2 cell lysate;  
Primary antibody: 216511(FGL1 Antibody) at dilution 1/800;  
Secondary antibody: HRP-conjugated Goat anti rabbit IgG at 1/5000 dilution;  
Exposure time: 30 seconds



# Product Description

Pioneering GTPase and Oncogene Product Development since 2010

---