

## FGFR1 ONCOGENE PARTNER RABBIT MAB

**Cat.#:** N263330

**Product Name:** Anti-FGFR1 Oncogene Partner Rabbit Monoclonal Antibody

**Synonyms:** FOP; FGFR1OP

**UNIPROT ID:** O95684

**Background:** Required for anchoring microtubules to the centrosomes.

**Immunogen:** A synthetic peptide of human FGFR1 Oncogene Partner

**Applications:** WB, ICC/IF, IP

**Recommended Dilutions:** WB: 1/500-1/1000 IF: 1/50-1/200 IP: 1/20

**Host Species:** Rabbit

**Clonality:** Rabbit Monoclonal

**Clone ID:** R02-1H4

**MW:** Calculated MW: 43 kDa; Observed MW: 43 kDa

**Isotype:** IgG

**Purification:** Affinity Purified

**Species Reactivity:** Human, Mouse, Rat

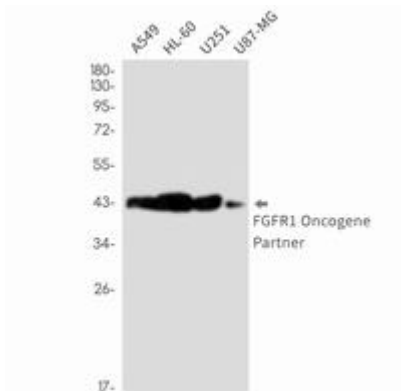
**Conjugation:** Unconjugated

**Modification:** Unmodified

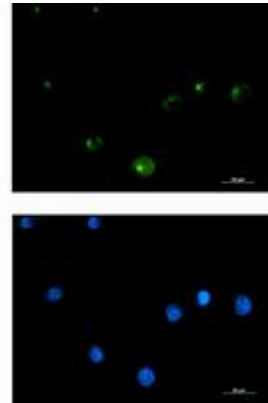
**Constituents:** PBS (without Mg<sup>2+</sup> and Ca<sup>2+</sup>), pH 7.3 containing 50% glycerol, 0.5% BSA and 0.02% sodium azide

**Research Areas:** -

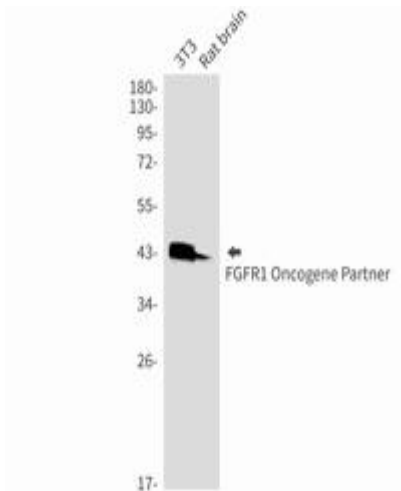
**Storage & Shipping:** Store at -20°C. Avoid repeated freezing and thawing



Western blot analysis of FGFR1 Oncogene Partner in A549, HL-60, U251, U87-MG lysates using FGFR1 Oncogene Partner antibody



Immunocytochemistry analysis of FGFR1 Oncogene Partner (green) in K562 using FGFR1 Oncogene Partner antibody, and DAPI (blue).



Western blot analysis of FGFR1 Oncogene Partner in 3T3, rat brain lysates using FGFR1 Oncogene Partner antibody.