

## FGF8 RABBIT PAB

**Cat.#:** N225185

**Product Name:** Anti-FGF8 Rabbit pAb

**Synonyms:** FGF8; AIGF; Fibroblast growth factor 8; FGF-8; Androgen-induced growth factor; AIGF; Heparin-binding growth factor 8; HBGF-8

**UNIPROT ID:** P55075

**Background:** The protein encoded by this gene is a member of the fibroblast growth factor (FGF) family. FGF family members possess broad mitogenic and cell survival activities, and are involved in a variety of biological processes, including embryonic development, cell growth, morphogenesis, tissue repair, tumor growth and invasion. This protein is known to be a factor that supports androgen and anchorage independent growth of mammary tumor cells. Overexpression of this gene has been shown to increase tumor growth and angiogenesis. The adult expression of this gene is restricted to Testes and ovaries. Temporal and spatial pattern of this gene expression suggests its function as an embryonic epithelial factor. Studies of the mouse and chick homologs revealed roles in midbrain and limb development, organogenesis, embryo gastrulation and left-right axis determination. The alternative splicing of this gene results in four transcript variants.

**Immunogen:** The antiserum was produced against synthesized peptide derived from the Internal region of human FGF8. AA range:141-190

**Applications:** WB,ELISA

**Recommended Dilutions:** WB: 1/500-1/1000 ELISA: 1/10000

**Host Species:** Rabbit

**Clonality:** Rabbit Polyclonal

**Clone ID:** -

**MW:** Calculated MW: 27 kDa; Observed MW: 27 kDa

**Isotype:** IgG

**Purification:** Affinity Purified

**Species Reactivity:** Human,Mouse,Rat

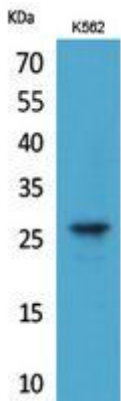
**Conjugation:** Unconjugated

**Modification:** Unmodified

**Constituents:** PBS (without Mg<sup>2+</sup> and Ca<sup>2+</sup>), pH 7.3 containing 50% glycerol, 0.5% BSA and 0.02% sodium azide

**Research Areas:** Cardiovascular

**Storage & Shipping:** Store at -20°C. Avoid repeated freezing and thawing



Western blot analysis of FGF8 in K562 lysates using FGF8 antibody.