

FERRITIN HEAVY CHAIN RABBIT PAB

Cat.#: N225679

Product Name: Anti-Ferritin Heavy Chain Rabbit pAb

Synonyms: FTH1; FTH; FTHL6; OK/SW-cl.84; PIG15; Ferritin heavy chain; Ferritin H subunit; Cell proliferation-inducing gene 15 protein

UNIPROT ID: P02794

Background: The assembled ferritin molecule, often referred to as a nanocage, can store up to 4,500 atoms of iron. It forms a holoenzyme of ~450 kDa, consisting of 24 subunits made up of two types of polypeptide chains: ferritin heavy chain and ferritin light chain, each having unique functions. Ferritin heavy chains catalyze the first step in iron storage, the oxidation of Fe(II), whereas ferritin light chains promote the nucleation of ferrihydrite, enabling storage of Fe(III).

Immunogen: A synthesized peptide derived from human Ferritin

Applications: WB, ICC/IF

Recommended Dilutions: WB: 1/500-1/1000 IF: 1/50-1/200

Host Species: Rabbit

Clonality: Rabbit Polyclonal

Clone ID: -

MW: Calculated MW: 21 kDa; Observed MW: 21 kDa

Isotype: IgG

Purification: Affinity Chromatography

Species Reactivity: Human, Mouse, Rat

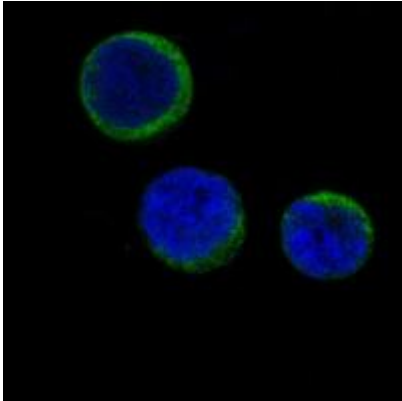
Conjugation: Unconjugated

Modification: Unmodified

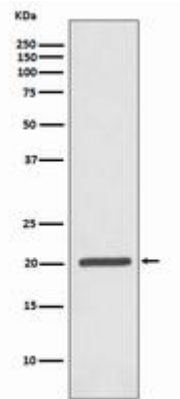
Constituents: PBS (without Mg²⁺ and Ca²⁺), pH 7.3 containing 50% glycerol, 0.5% BSA and 0.02% sodium azide

Research Areas: Neuroscience

Storage & Shipping: Store at -20°C. Avoid repeated freezing and thawing



Immunofluorescence analysis of Ferritin Heavy Chain in Jurkat using Ferritin antibody.



Western blot analysis of Ferritin in Jurkat lysates using Ferritin Heavy Chain antibody.