

FERRITIN HEAVY CHAIN RABBIT MAB

Cat.#: N261741

Product Name: Anti-Ferritin Heavy Chain Rabbit Monoclonal Antibody

Synonyms: FTH1; FTH; FTHL6; OK/SW-cl.84; PIG15; Ferritin heavy chain; Ferritin H subunit; Cell proliferation-inducing gene 15 protein

UNIPROT ID: P02794

Background: The assembled ferritin molecule, often referred to as a nanocage, can store up to 4,500 atoms of iron. It forms a holoenzyme of ~450 kDa, consisting of 24 subunits made up of two types of polypeptide chains: ferritin heavy chain and ferritin light chain, each having unique functions. Ferritin heavy chains catalyze the first step in iron storage, the oxidation of Fe(II), whereas ferritin light chains promote the nucleation of ferrihydrite, enabling storage of Fe(III).

Immunogen: A synthetic peptide of human Ferritin

Applications: WB, ICC/IF

Recommended Dilutions: WB: 1/500-1/1000 IF: 1/50-1/200

Host Species: Rabbit

Clonality: Rabbit Monoclonal

Clone ID: R03-3D9

MW: Calculated MW: 21 kDa; Observed MW: 21 kDa

Isotype: IgG

Purification: Affinity Purified

Species Reactivity: Human, Mouse, Rat, Hamster

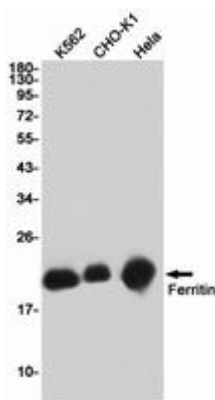
Conjugation: Unconjugated

Modification: Unmodified

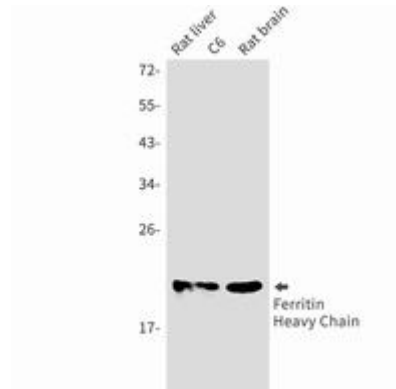
Constituents: PBS (without Mg²⁺ and Ca²⁺), pH 7.3 containing 50% glycerol, 0.5% BSA and 0.02% sodium azide

Research Areas: Neuroscience

Storage & Shipping: Store at -20°C. Avoid repeated freezing and thawing



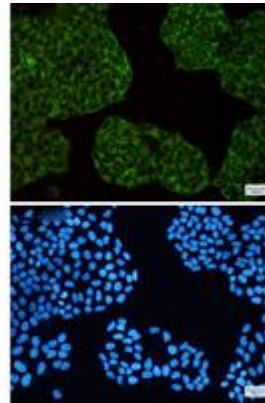
Western blot analysis of Ferritin in K562, CHO-K1, HeLa lysates using Ferritin antibody



Western blot analysis of Ferritin Heavy Chain in rat liver, C6, rat brain lysates using Ferritin Heavy Chain antibody.



Western blot analysis of Ferritin in Raw264.7 lysates using Ferritin antibody.



Immunocytochemistry analysis of Ferritin (green) in HeLa using Ferritin antibody, and DAPI (blue).