

FER RABBIT PAB

Cat.#: S222029

Product Name: Anti-FER Rabbit Polyclonal Antibody

Synonyms: TYK3; PPP1R74; p94-Fer

UNIPROT ID: P16591 (Gene Accession - NP_005237)

Background: The protein encoded by this gene is a member of the FPS/FES family of non-transmembrane receptor tyrosine kinases. It regulates cell-cell adhesion and mediates signaling from the cell surface to the cytoskeleton via growth factor receptors. Alternative splicing results in multiple transcript variants. A related pseudogene has been identified on chromosome X.

Immunogen: Synthetic peptide of human FER

Applications: ELISA, IHC

Recommended Dilutions: IHC: 50-300; ELISA: 5000-10000

Host Species: Rabbit

Clonality: Rabbit Polyclonal

Isotype: Immunogen-specific rabbit IgG

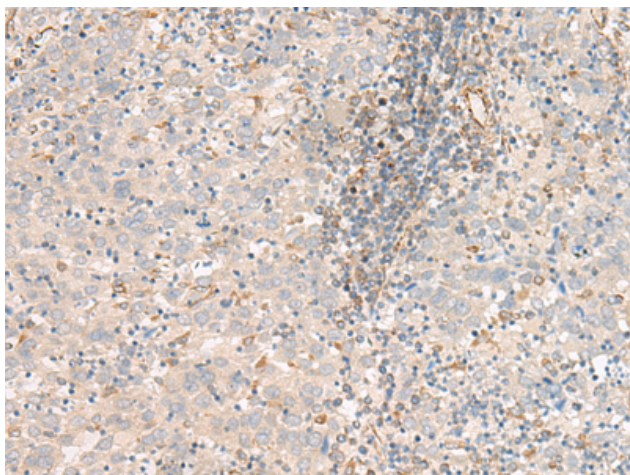
Purification: Antigen affinity purification

Species Reactivity: Human, Mouse, Rat

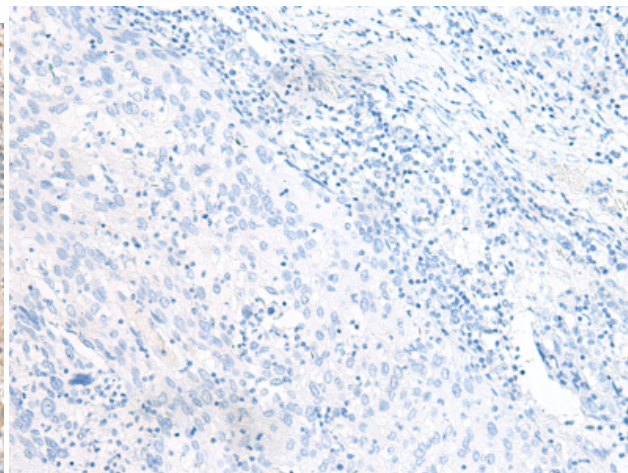
Constituents: PBS (without Mg²⁺ and Ca²⁺), pH 7.4, 150 mM NaCl, 0.05% Sodium Azide and 40% glycerol

Research Areas: Signal Transduction, Cancer

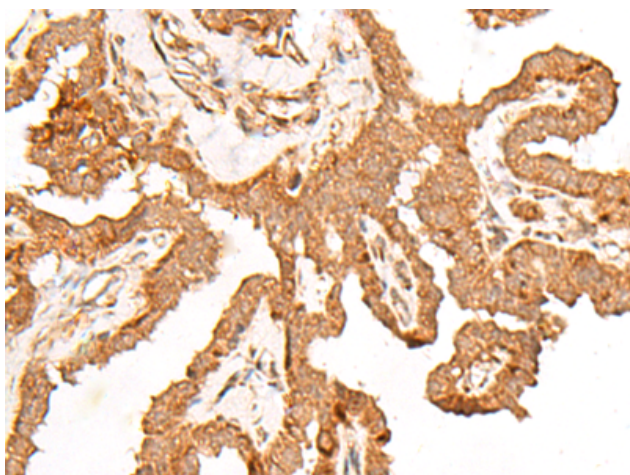
Storage & Shipping: Store at -20°C. Avoid repeated freezing and thawing



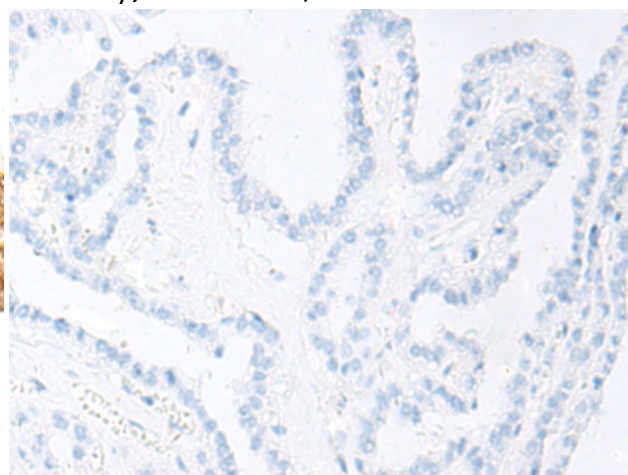
Immunohistochemistry analysis of paraffin embedded Human cervical cancer tissue using 222029(FER Antibody) at a dilution of 1/80(Cytoplasm or Nucleus).



In comparison with the IHC on the left, the same paraffin-embedded Human cervical cancer tissue is first treated with the synthetic peptide and then with 222029(Anti-FER Antibody) at dilution 1/80.



The image on the left is immunohistochemistry of paraffin-embedded Human thyroid cancer tissue using 222029(Anti-FER Antibody) at a dilution of 1/80.



In comparison with the IHC on the left, the same paraffin-embedded Human thyroid cancer tissue is first treated with synthetic peptide and then with D263907(Anti-FER Antibody) at dilution 1/80.