

## FCRLA RABBIT PAB

**Cat.#:** S219354

**Product Name:** Anti-FCRLA Rabbit Polyclonal Antibody

**Synonyms:** FCRL; FCRX; FREB; FCRL1; FCRLX; FCRLb; FCRLd; FCRLe; FCRLM1; FCRLc1; FCRLc2

**UNIPROT ID:** Q7L513 (Gene Accession - BC006521 )

**Background:** This gene encodes a protein similar to receptors for the Fc fragment of gamma immunoglobulin (IgG). These receptors, referred to as FCGRs, mediate the destruction of IgG-coated antigens and of cells induced by antibodies. This encoded protein is selectively expressed in B cells, and may be involved in their development. This protein may also be involved in the development of lymphomas. Multiple alternatively spliced transcript variants that encode different protein isoforms have been described for this gene.

**Immunogen:** Fusion protein of human FCRLA

**Applications:** ELISA, WB, IHC

**Recommended Dilutions:** IHC: 100-200;WB: 500-2000;ELISA: 5000-10000

**Host Species:** Rabbit

**Clonality:** Rabbit Polyclonal

**Isotype:** Immunogen-specific rabbit IgG

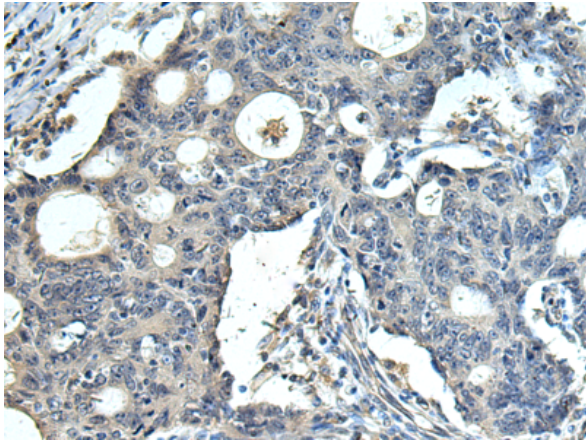
**Purification:** Antigen affinity purification

**Species Reactivity:** Human

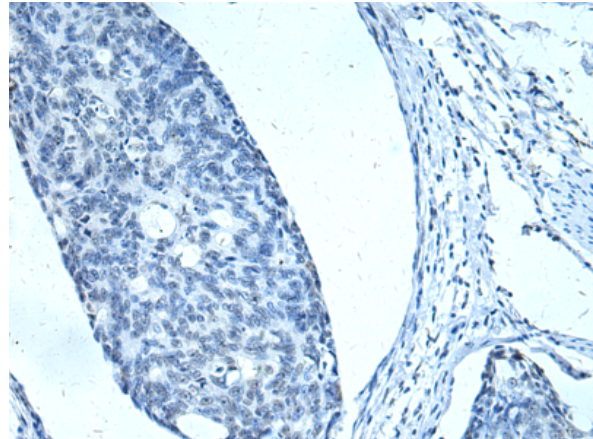
**Constituents:** PBS (without Mg<sup>2+</sup> and Ca<sup>2+</sup>), pH 7.4, 150 mM NaCl, 0.05% Sodium Azide and 40% glycerol

**Research Areas:** Immunology

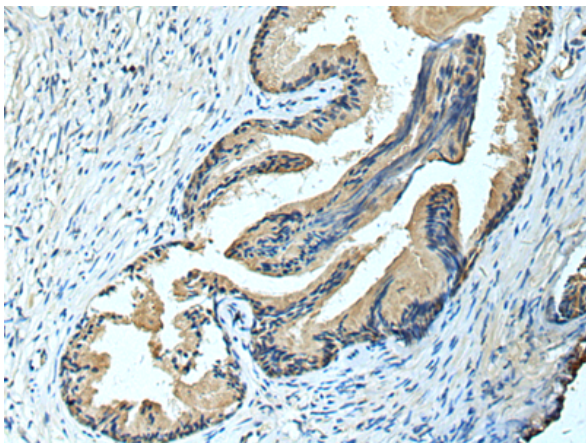
**Storage & Shipping:** Store at -20°C. Avoid repeated freezing and thawing



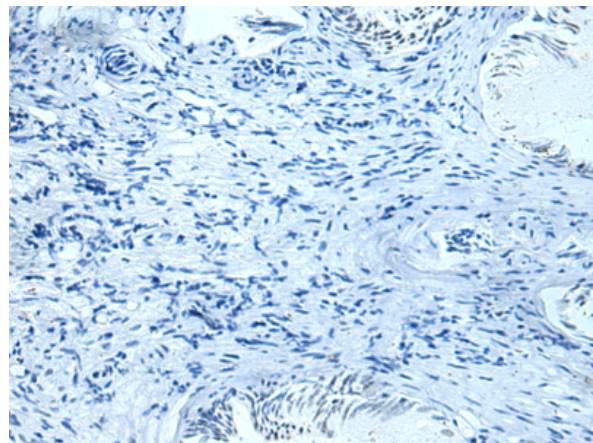
Immunohistochemistry analysis of paraffin embedded Human colorectal cancer tissue using 219354(FCRLA Antibody) at a dilution of 1/90(Cytoplasm).



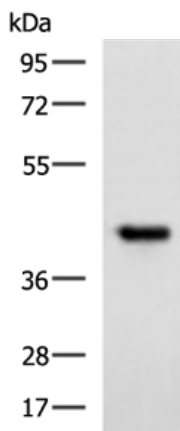
In comparison with the IHC on the left, the same paraffin-embedded Human colorectal cancer tissue is first treated with the fusion protein and then with 219354(Anti-FCRLA Antibody) at dilution 1/90.



The image on the left is immunohistochemistry of paraffin-embedded Human prostate cancer tissue using 219354(Anti-FCRLA Antibody) at a dilution of 1/90.



In comparison with the IHC on the left, the same paraffin-embedded Human prostate cancer tissue is first treated with fusion protein and then with D226511(Anti-FCRLA Antibody) at dilution 1/90.



Gel: 8%SDS-PAGE, Lysate: 40 µg;  
 Lane: Ramos cell lysate;  
 Primary antibody: 219354(FCRLA Antibody) at dilution 1/750;  
 Secondary antibody: HRP-conjugated Goat anti rabbit IgG at 1/5000 dilution;  
 Exposure time: 1 minute



# Product Description

Pioneering GTPase and Oncogene Product Development since 2010

---