

## FCGR2B RABBIT PAB

**Cat.#:** S217437

**Product Name:** Anti-FCGR2B Rabbit Polyclonal Antibody

**Synonyms:** CD32; FCG2; CD32B; FCGR2; IGFR2

**UNIPROT ID:** P31994 (Gene Accession - BC031992)

**Background:** The protein encoded by this gene is a low affinity receptor for the Fc region of immunoglobulin gamma complexes. The encoded protein is involved in the phagocytosis of immune complexes and in the regulation of antibody production by B-cells. Variations in this gene may increase susceptibility to systemic lupus erythematosus (SLE). Several transcript variants encoding different isoforms have been found for this gene.

**Immunogen:** Fusion protein of human FCGR2B

**Applications:** ELISA, WB, IHC

**Recommended Dilutions:** IHC: 50-200;WB: 500-2000;ELISA: 2000-5000

**Host Species:** Rabbit

**Clonality:** Rabbit Polyclonal

**Isotype:** Immunogen-specific rabbit IgG

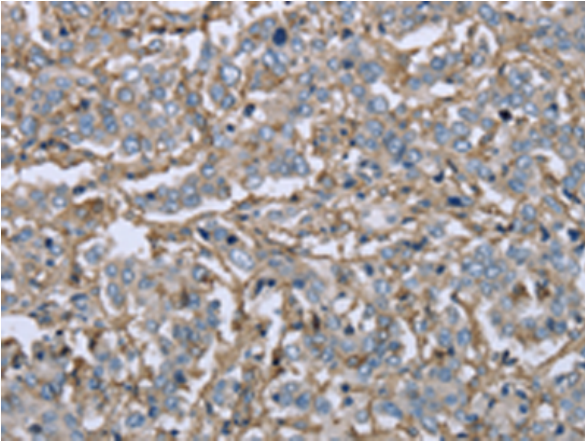
**Purification:** Antigen affinity purification

**Species Reactivity:** Human

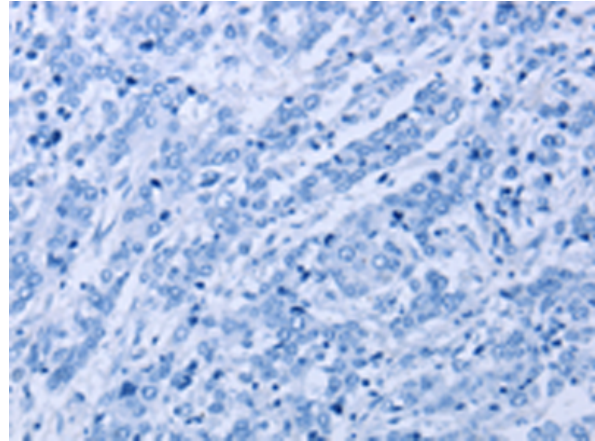
**Constituents:** PBS (without Mg<sup>2+</sup> and Ca<sup>2+</sup>), pH 7.4, 150 mM NaCl, 0.05% Sodium Azide and 40% glycerol

**Research Areas:** Immunology, Stem Cells

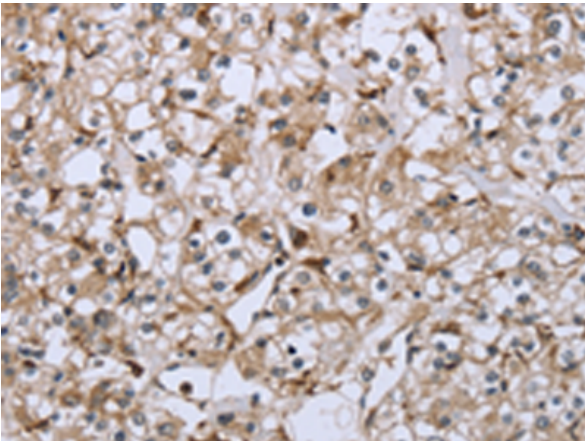
**Storage & Shipping:** Store at -20°C. Avoid repeated freezing and thawing



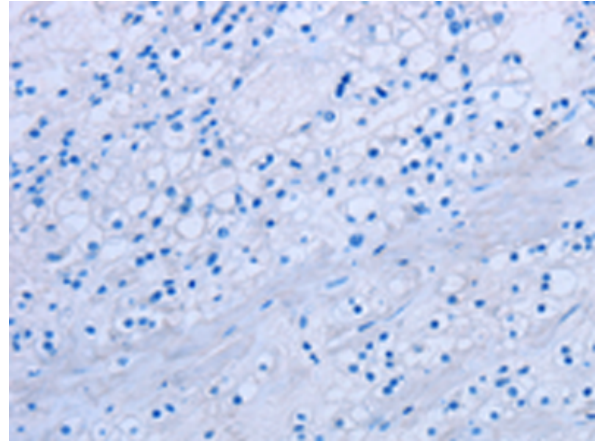
Immunohistochemistry analysis of paraffin embedded Human liver cancer tissue using 217437(FCGR2B Antibody) at a dilution of 1/40(Cytoplasm).



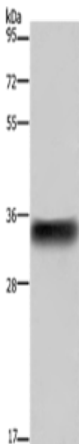
In comparison with the IHC on the left, the same paraffin-embedded Human liver cancer tissue is first treated with the fusion protein and then with 217437(Anti-FCGR2B Antibody) at dilution 1/40.



The image on the left is immunohistochemistry of paraffin-embedded Human prostate cancer tissue using 217437(Anti-FCGR2B Antibody) at a dilution of 1/40.



In comparison with the IHC on the left, the same paraffin-embedded Human prostate cancer tissue is first treated with fusion protein and then with D222355(Anti-FCGR2B Antibody) at dilution 1/40.



Gel: 8%SDS-PAGE, Lysate: 40 µg;  
Lane: Human placenta tissue;  
Primary antibody: 217437(FCGR2B Antibody) at dilution 1/850;  
Secondary antibody: Goat anti rabbit IgG at 1/8000 dilution;  
Exposure time: 5 seconds



# Product Description

Pioneering GTPase and Oncogene Product Development since 2010

---