

## FCGR1A RABBIT PAB

**Cat.#:** S221701

**Product Name:** Anti-FCGR1A Rabbit Polyclonal Antibody

**Synonyms:** CD64; FCRI; CD64A; IGFR1

**UNIPROT ID:** P12314 (Gene Accession - NP\_000557 )

**Background:** This gene encodes a protein that plays an important role in the immune response. This protein is a high-affinity Fc-gamma receptor. The gene is one of three related gene family members located on chromosome 1.

**Immunogen:** Synthetic peptide of human FCGR1A

**Applications:** ELISA, IHC

**Recommended Dilutions:** IHC: 30-150; ELISA: 5000-10000

**Host Species:** Rabbit

**Clonality:** Rabbit Polyclonal

**Isotype:** Immunogen-specific rabbit IgG

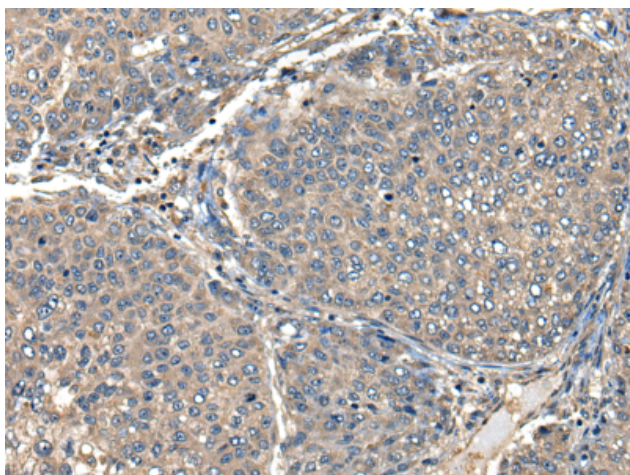
**Purification:** Antigen affinity purification

**Species Reactivity:** Human

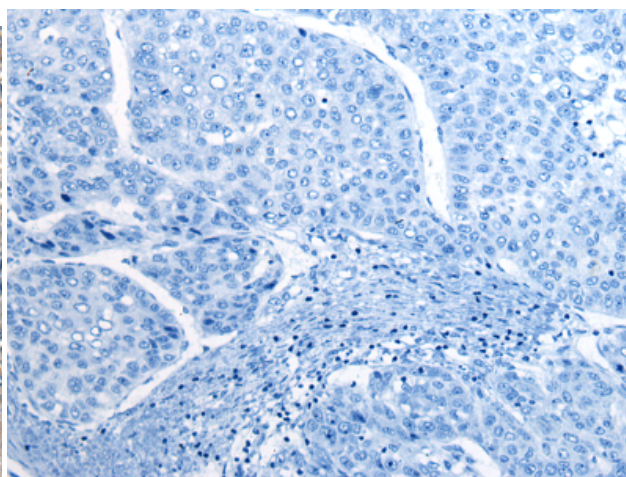
**Constituents:** PBS (without Mg<sup>2+</sup> and Ca<sup>2+</sup>), pH 7.4, 150 mM NaCl, 0.05% Sodium Azide and 40% glycerol

**Research Areas:** Immunology

**Storage & Shipping:** Store at -20°C. Avoid repeated freezing and thawing



Immunohistochemistry analysis of paraffin embedded Human liver cancer tissue using 221701(FCGR1A Antibody) at a dilution of 1/35(Cell membrane).



In comparison with the IHC on the left, the same paraffin-embedded Human liver cancer tissue is first treated with the synthetic peptide and then with 221701(Anti-FCGR1A Antibody) at dilution 1/35.