

## FBXO42 RABBIT PAB

**Cat.#:** S219439

**Product Name:** Anti-FBXO42 Rabbit Polyclonal Antibody

**Synonyms:** JFK; Fbx42

**UNIPROT ID:** Q6P3S6 (Gene Accession - BC063864 )

**Background:** Members of the F-box protein family, such as FBXO42, are characterized by an approximately 40-amino acid F-box motif. SCF complexes, formed by SKP1 (SKP1A; MIM 601434), cullin (see CUL1; MIM 603134), and F-box proteins, act as protein-ubiquitin ligases. F-box proteins interact with SKP1 through the F box and they interact with ubiquitination targets through other protein interaction domains (Jin et al., 2004 [PubMed 15520277]).

**Immunogen:** Fusion protein of human FBXO42

**Applications:** ELISA, IHC

**Recommended Dilutions:** IHC: 100-200; ELISA: 5000-10000

**Host Species:** Rabbit

**Clonality:** Rabbit Polyclonal

**Isotype:** Immunogen-specific rabbit IgG

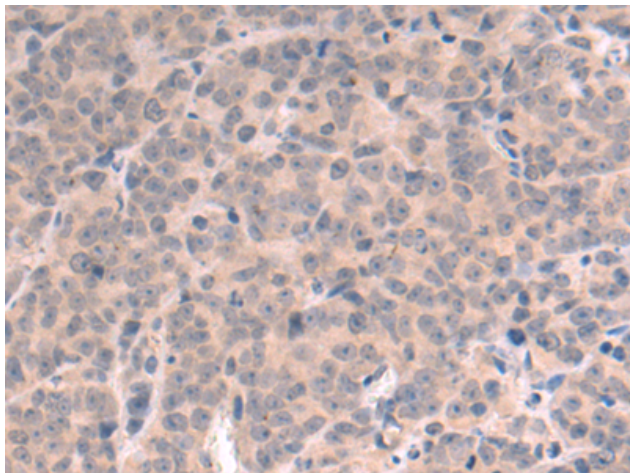
**Purification:** Antigen affinity purification

**Species Reactivity:** Human, Mouse

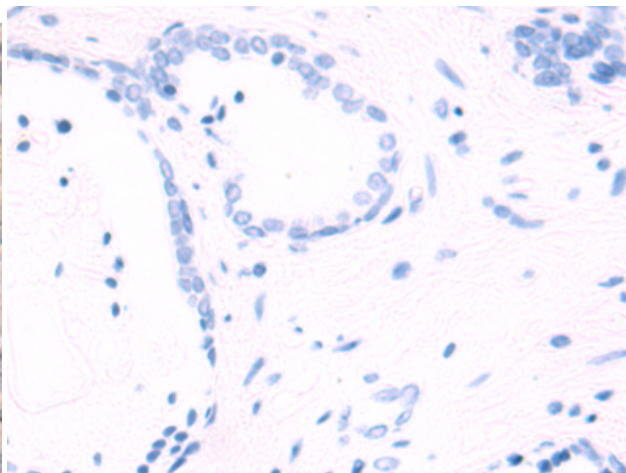
**Constituents:** PBS (without Mg<sup>2+</sup> and Ca<sup>2+</sup>), pH 7.4, 150 mM NaCl, 0.05% Sodium Azide and 40% glycerol

**Research Areas:** Cell Biology, Epigenetics and Nuclear Signaling

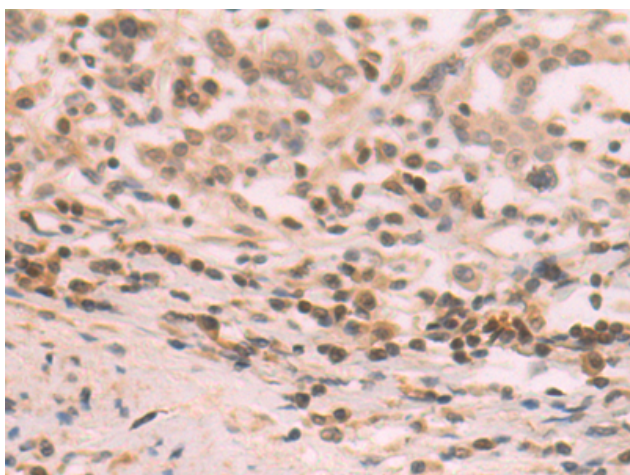
**Storage & Shipping:** Store at -20°C. Avoid repeated freezing and thawing



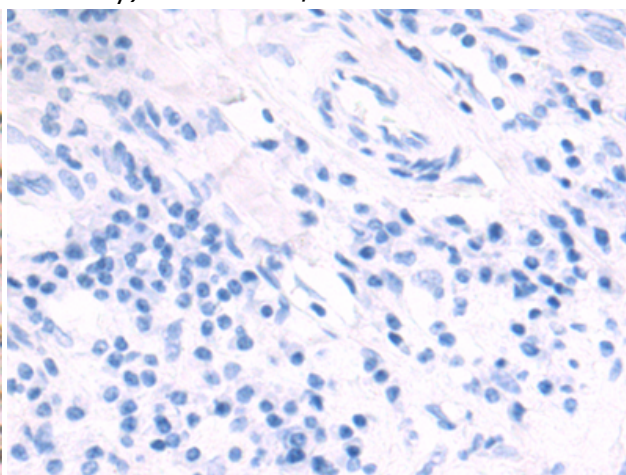
Immunohistochemistry analysis of paraffin embedded Human prostate cancer tissue using 219439(FBXO42 Antibody) at a dilution of 1/100(Cytoplasm and Nucleus).



In comparison with the IHC on the left, the same paraffin-embedded Human prostate cancer tissue is first treated with the fusion protein and then with 219439(Anti-FBXO42 Antibody) at dilution 1/100.



The image on the left is immunohistochemistry of paraffin-embedded Human gastric cancer tissue using 219439(Anti-FBXO42 Antibody) at a dilution of 1/100.



In comparison with the IHC on the left, the same paraffin-embedded Human gastric cancer tissue is first treated with fusion protein and then with D227038(Anti-FBXO42 Antibody) at dilution 1/100.