

FAN1 RABBIT PAB

Cat.#: S222015

Product Name: Anti-FAN1 Rabbit Polyclonal Antibody

Synonyms: KMIN; hFAN1; MTMR15; KIAA1018

UNIPROT ID: Q9Y2M0 (Gene Accession - NP_055782)

Background: This gene plays a role in DNA interstrand cross-link repair and encodes a protein with 5' flap endonuclease and 5'-3' exonuclease activity. Mutations in this gene cause karyomegalic interstitial nephritis. Alternatively spliced transcript variants encoding distinct isoforms have been described.

Immunogen: Synthetic peptide of human FAN1

Applications: ELISA, IHC

Recommended Dilutions: IHC: 30-150; ELISA: 5000-10000

Host Species: Rabbit

Clonality: Rabbit Polyclonal

Isotype: Immunogen-specific rabbit IgG

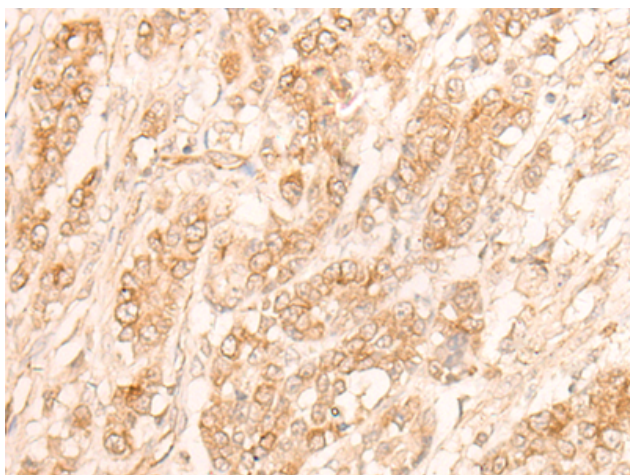
Purification: Antigen affinity purification

Species Reactivity: Human

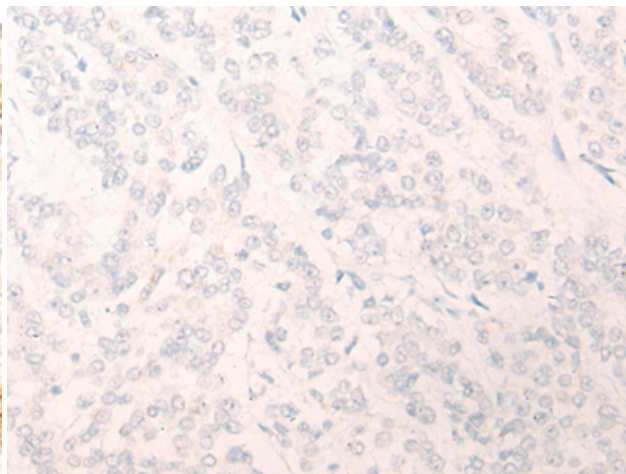
Constituents: PBS (without Mg²⁺ and Ca²⁺), pH 7.4, 150 mM NaCl, 0.05% Sodium Azide and 40% glycerol

Research Areas: Epigenetics and Nuclear Signaling

Storage & Shipping: Store at -20°C. Avoid repeated freezing and thawing



Immunohistochemistry analysis of paraffin embedded Human colorectal cancer tissue using 222015 (FAN1 Antibody) at a dilution of 1/30 (Nucleus).



In comparison with the IHC on the left, the same paraffin-embedded Human colorectal cancer tissue is first treated with the synthetic peptide and then with 222015 (Anti-FAN1 Antibody) at dilution 1/30.