

FAM91A1 RABBIT PAB

Cat.#: S222014

Product Name: Anti-FAM91A1 Rabbit Polyclonal Antibody

Synonyms:

UNIPROT ID: Q658Y4 (Gene Accession - NP_659400)

Background: FAM91A1 (family with sequence similarity 91, member A1) is a 94 kDa phospho-protein that is not yet characterized.

Immunogen: Synthetic peptide of human FAM91A1

Applications: ELISA, IHC

Recommended Dilutions: IHC: 30-150; ELISA: 5000-10000

Host Species: Rabbit

Clonality: Rabbit Polyclonal

Isotype: Immunogen-specific rabbit IgG

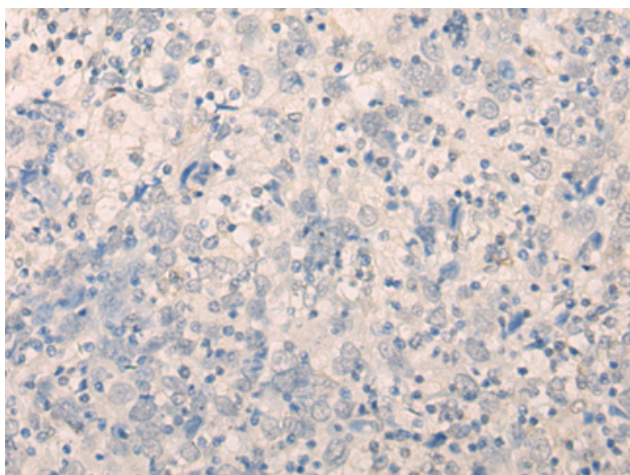
Purification: Antigen affinity purification

Species Reactivity: Human, Mouse

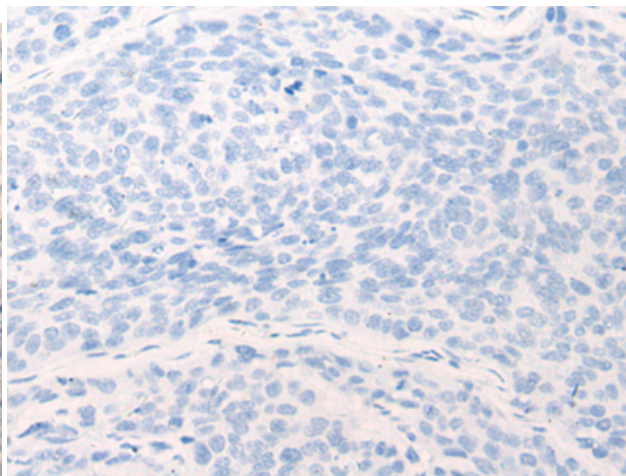
Constituents: PBS (without Mg²⁺ and Ca²⁺), pH 7.4, 150 mM NaCl, 0.05% Sodium Azide and 40% glycerol

Research Areas: Cell Biology

Storage & Shipping: Store at -20°C. Avoid repeated freezing and thawing



Immunohistochemistry analysis of paraffin embedded Human cervical cancer tissue using 222014(FAM91A1 Antibody) at a dilution of 1/35(Cytoplasm).



In comparison with the IHC on the left, the same paraffin-embedded Human cervical cancer tissue is first treated with the synthetic peptide and then with 222014(Anti-FAM91A1 Antibody) at dilution 1/35.