

## FAM50A RABBIT MAB

**Cat.#:** N262207

**Product Name:** Anti-FAM50A Rabbit Monoclonal Antibody

**Synonyms:** family with sequence similarity 50 member A; 9F; XAP5; HXC26; HXC-26; DXS9928E

**UNIPROT ID:** Q14320

**Background:** May be a DNA-binding protein or transcriptional factor.

**Immunogen:** A synthetic peptide of human FAM50A

**Applications:** WB,IHC-F,IHC-P,ICC/IF,IP

**Recommended Dilutions:** WB: 1/500-1/1000 IHC: 1/50-1/100 IF: 1/50-1/200 IP: 1/20

**Host Species:** Rabbit

**Clonality:** Rabbit Monoclonal

**Clone ID:** R08-2G7

**MW:** Calculated MW: 40 kDa; Observed MW: 40 kDa

**Isotype:** IgG

**Purification:** Affinity Purified

**Species Reactivity:** Human,Mouse,Rat,Hamster

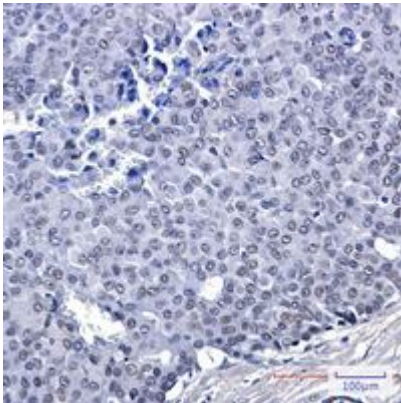
**Conjugation:** Unconjugated

**Modification:** Unmodified

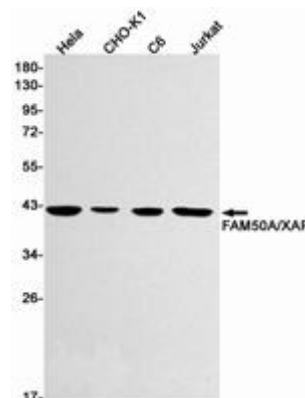
**Constituents:** PBS (without Mg<sup>2+</sup> and Ca<sup>2+</sup>), pH 7.3 containing 50% glycerol, 0.5% BSA and 0.02% sodium azide

**Research Areas:** Cell Biology

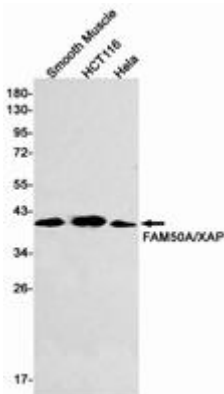
**Storage & Shipping:** Store at -20°C. Avoid repeated freezing and thawing



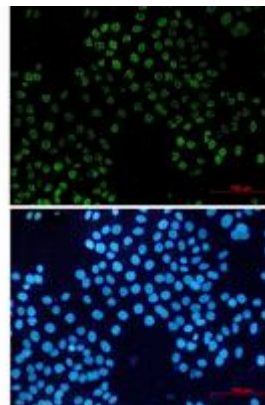
Immunohistochemistry analysis of paraffin-embedded Human breast cancer using FAM50A antibody. High-pressure and temperature Sodium Citrate pH 6.0 was used for antigen retrieval.



Western blot analysis of FAM50A/XAP in HeLa, CHO-K1, C6, Jurkat lysates using FAM50A antibody.



Western blot analysis of FAM50A/XAP in Smooth Muscle, HCT116, HeLa lysates using FAM50A/XAP antibody.



Immunocytochemistry analysis of FAM50A (green) in HeLa using FAM50A antibody, and DAPI (blue).