

FAM3A RABBIT PAB

Cat.#: S216712

Product Name: Anti-FAM3A Rabbit Polyclonal Antibody

Synonyms: DLD; 2.19; XAP-7; DXS560S

UNIPROT ID: P98173 (Gene Accession - BC008912)

Background: This gene encodes a cytokine-like protein. The expression of this gene may be regulated by peroxisome proliferator-activated receptor gamma, and the encoded protein may be involved in the regulation of glucose and lipid metabolism. Alternative splicing results in multiple transcript variants.

Immunogen: Fusion protein of human FAM3A

Applications: ELISA, WB, IHC

Recommended Dilutions: IHC: 50-200;WB: 500-2000;ELISA: 5000-10000

Host Species: Rabbit

Clonality: Rabbit Polyclonal

Isotype: Immunogen-specific rabbit IgG

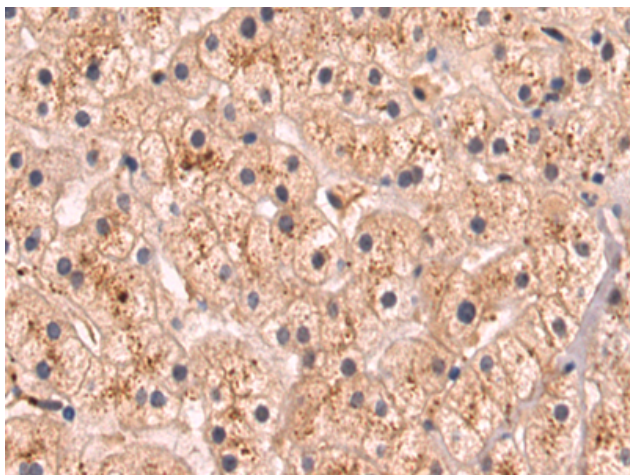
Purification: Antigen affinity purification

Species Reactivity: Human, Mouse

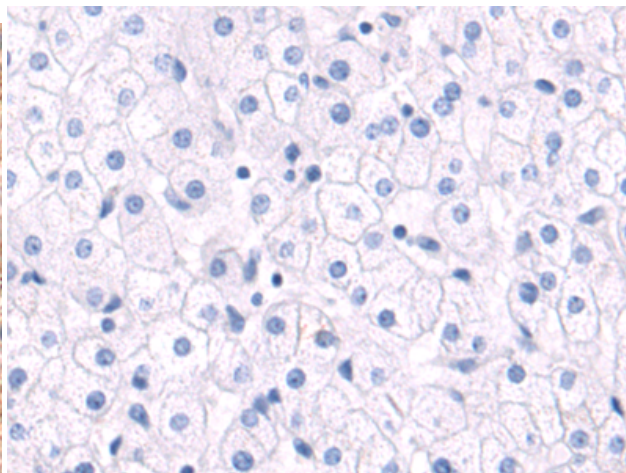
Constituents: PBS (without Mg²⁺ and Ca²⁺), pH 7.4, 150 mM NaCl, 0.05% Sodium Azide and 40% glycerol

Research Areas: Signal Transduction

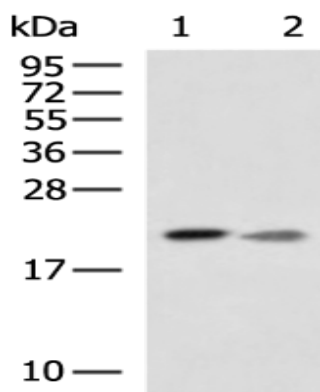
Storage & Shipping: Store at -20°C. Avoid repeated freezing and thawing



Immunohistochemistry analysis of paraffin embedded Human liver cancer tissue using 216712(FAM3A Antibody) at a dilution of 1/80(Secreted).



In comparison with the IHC on the left, the same paraffin-embedded Human liver cancer tissue is first treated with the fusion protein and then with 216712(Anti-FAM3A Antibody) at dilution 1/80.



Gel: 12%SDS-PAGE, Lysate: 40 µg;
 Lane 1-2: Mouse pancreas tissue, Human cerebella tissue lysates;
 Primary antibody: 216712(FAM3A Antibody) at dilution 1/300;
 Secondary antibody: HRP-conjugated Goat anti rabbit IgG at 1/5000 dilution;
 Exposure time: 30 seconds