

## FAM177B RABBIT PAB

**Cat.#:** S222007

**Product Name:** Anti-FAM177B Rabbit Polyclonal Antibody

**Synonyms:**

**UNIPROT ID:** A6PVY3 (Gene Accession - NP\_997351 )

**Background:** The function of this protein remains unknown.

**Immunogen:** Synthetic peptide of human FAM177B

**Applications:** ELISA, IHC

**Recommended Dilutions:** IHC: 50-200; ELISA: 5000-10000

**Host Species:** Rabbit

**Clonality:** Rabbit Polyclonal

**Isotype:** Immunogen-specific rabbit IgG

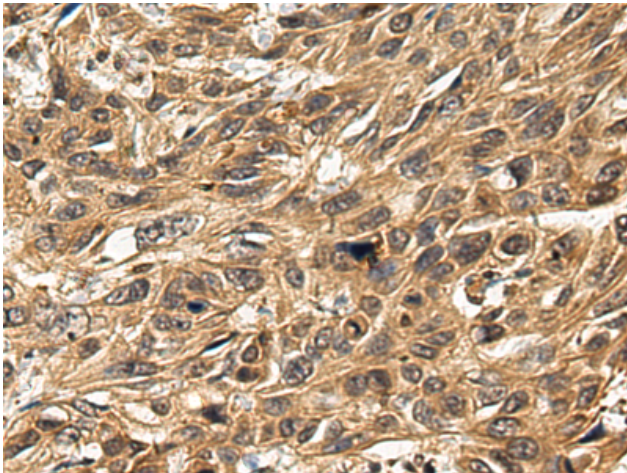
**Purification:** Antigen affinity purification

**Species Reactivity:** Human

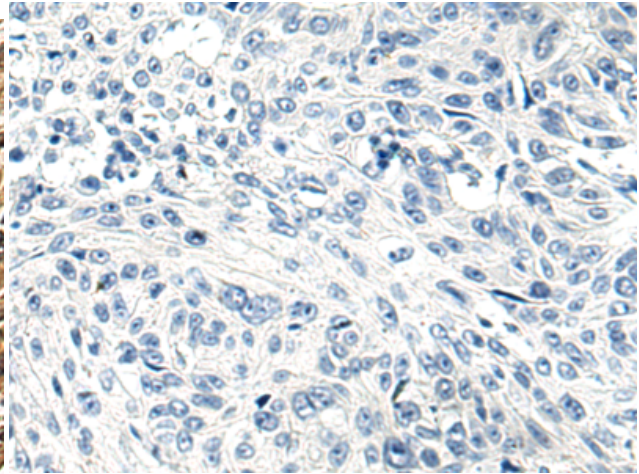
**Constituents:** PBS (without Mg<sup>2+</sup> and Ca<sup>2+</sup>), pH 7.4, 150 mM NaCl, 0.05% Sodium Azide and 40% glycerol

**Research Areas:** Cell Biology

**Storage & Shipping:** Store at -20°C. Avoid repeated freezing and thawing



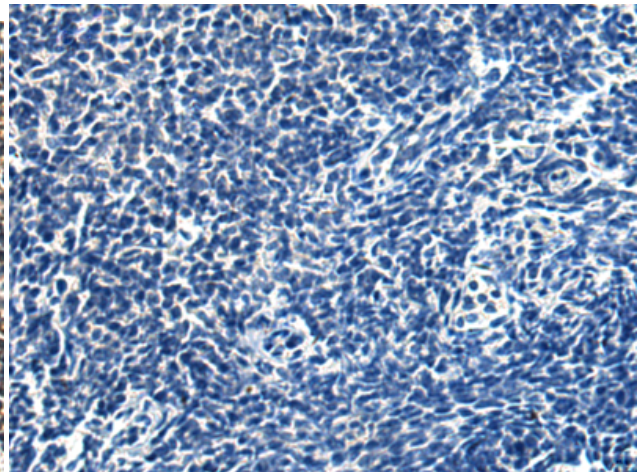
Immunohistochemistry analysis of paraffin embedded Human esophagus cancer using 222007(FAM177B Antibody) at a dilution of 1/50(Cytoplasm).



In comparison with the IHC on the left, the same paraffin-embedded Human esophagus cancer is first treated with the synthetic peptide and then with 222007(Anti-FAM177B Antibody) at dilution 1/50.



The image on the left is immunohistochemistry of paraffin-embedded Human tonsil using 222007(Anti-FAM177B Antibody) at a dilution of 1/50.



In comparison with the IHC on the left, the same paraffin-embedded Human tonsil is first treated with synthetic peptide and then with D263875(Anti-FAM177B Antibody) at dilution 1/50.