

## FABP7 RABBIT PAB

**Cat.#:** S216506

**Product Name:** Anti-FABP7 Rabbit Polyclonal Antibody

**Synonyms:** MRG; BLBP; FABPB; B-FABP

**UNIPROT ID:** O15540 (Gene Accession - BC012299 )

**Background:** The gene encodes a small, highly conserved cytoplasmic protein that bind long-chain fatty acids and other hydrophobic ligands. The encoded protein is important in the establishment of the radial glial fiber in the developing brain. Alternative splicing and promoter usage results in multiple transcript variants encoding different isoforms. Pseudogenes of this gene are found on multiple chromosomes.

**Immunogen:** Fusion protein of human FABP7

**Applications:** ELISA, WB, IHC

**Recommended Dilutions:** IHC: 50-200;WB: 1000-5000;ELISA: 5000-10000

**Host Species:** Rabbit

**Clonality:** Rabbit Polyclonal

**Isotype:** Immunogen-specific rabbit IgG

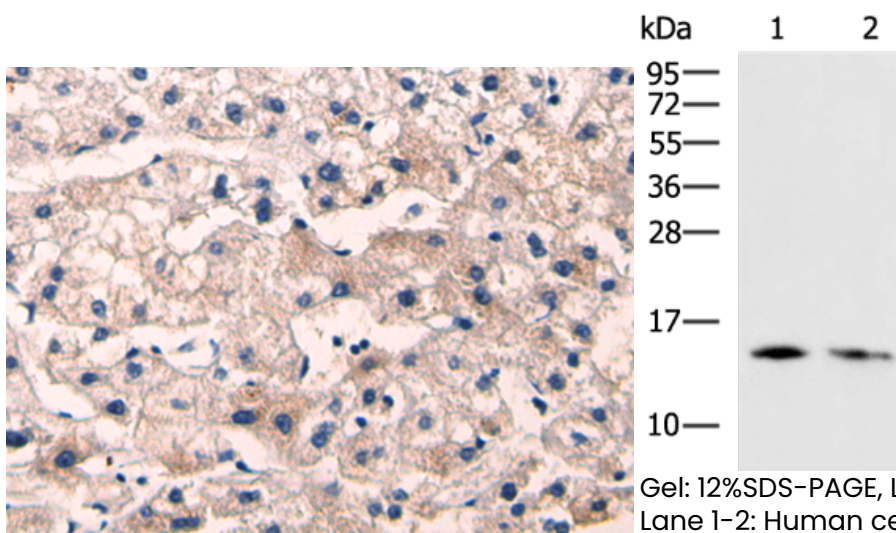
**Purification:** Antigen affinity purification

**Species Reactivity:** Human, Mouse, Rat

**Constituents:** PBS (without Mg<sup>2+</sup> and Ca<sup>2+</sup>), pH 7.4, 150 mM NaCl, 0.05% Sodium Azide and 40% glycerol

**Research Areas:** Metabolism, Neuroscience

**Storage & Shipping:** Store at -20°C. Avoid repeated freezing and thawing



Immunohistochemistry analysis of paraffin-embedded Human liver cancer tissue using 216506(FABP7 Antibody) at a dilution of 1/75(Cytoplasm).

Gel: 12%SDS-PAGE, Lysate: 40 µg;  
Lane 1-2: Human cerebella tissue, Mouse brain tissue lysates;  
Primary antibody: 216506(FABP7 Antibody) at dilution 1/1000;  
Secondary antibody: HRP-conjugated Goat anti rabbit IgG at 1/5000 dilution;  
Exposure time: 20 seconds



# Product Description

Pioneering GTPase and Oncogene Product Development since 2010

---