

## FABP6 RABBIT PAB

**Cat.#:** S219414

**Product Name:** Anti-FABP6 Rabbit Polyclonal Antibody

**Synonyms:** ILBP; I-15P; I-BAP; ILBP3; ILLBP; I-BABP; I-BALB

**UNIPROT ID:** P51161 (Gene Accession - BC022489 )

**Background:** This gene encodes the ileal fatty acid binding protein. Fatty acid binding proteins are a family of small, highly conserved, cytoplasmic proteins that bind long-chain fatty acids and other hydrophobic ligands. FABP6 and FABP1 (the liver fatty acid binding protein) are also able to bind bile acids. It is thought that FABPs roles include fatty acid uptake, transport, and metabolism. Transcript variants generated by alternate transcription promoters and/or alternate splicing have been found for this gene.

**Immunogen:** Fusion protein of human FABP6

**Applications:** ELISA, WB, IHC

**Recommended Dilutions:** IHC: 200-400;WB: 500-2000;ELISA: 5000-10000

**Host Species:** Rabbit

**Clonality:** Rabbit Polyclonal

**Isotype:** Immunogen-specific rabbit IgG

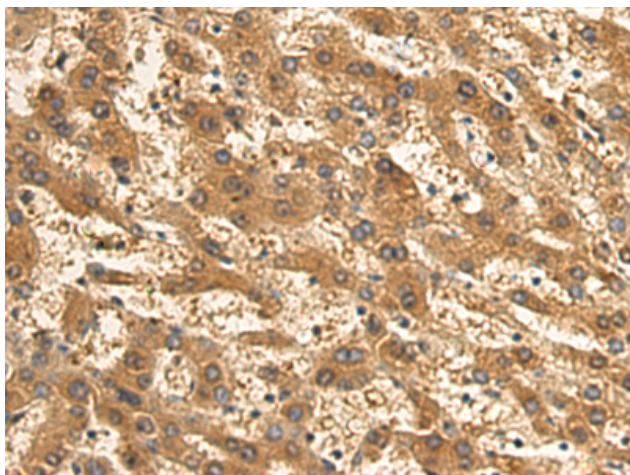
**Purification:** Antigen affinity purification

**Species Reactivity:** Human, Mouse

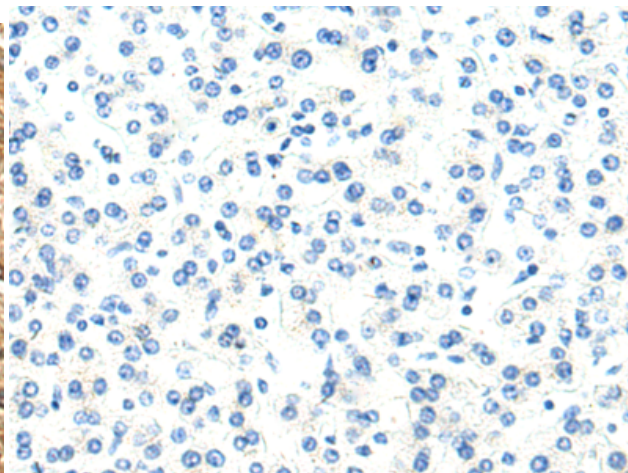
**Constituents:** PBS (without Mg<sup>2+</sup> and Ca<sup>2+</sup>), pH 7.4, 150 mM NaCl, 0.05% Sodium Azide and 40% glycerol

**Research Areas:** Metabolism, Cancer, Cardiovascular

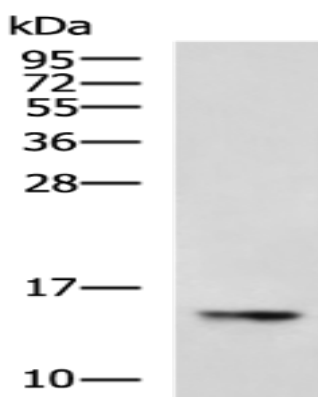
**Storage & Shipping:** Store at -20°C. Avoid repeated freezing and thawing



Immunohistochemistry analysis of paraffin embedded Human liver cancer tissue using 219414(FABP6 Antibody) at a dilution of 1/200(Cytoplasm).



In comparison with the IHC on the left, the same paraffin-embedded Human liver cancer tissue is first treated with the fusion protein and then with 219414(Anti-FABP6 Antibody) at dilution 1/200.



Gel: 12%SDS-PAGE, Lysate: 40  $\mu$ g;  
Lane: Mouse small intestines tissue lysate;  
Primary antibody: 219414(FABP6 Antibody) at dilution 1/1000;  
Secondary antibody: HRP-conjugated Goat anti rabbit IgG at 1/5000 dilution;  
Exposure time: 3 minutes