

## FABP2 RABBIT PAB

**Cat.#:** S216507

**Product Name:** Anti-FABP2 Rabbit Polyclonal Antibody

**Synonyms:** FABPI; I-FABP

**UNIPROT ID:** P12104 (Gene Accession - BC069466 )

**Background:** The protein encoded by this gene is an intracellular fatty acid-binding protein that participates in the uptake, intracellular metabolism, and transport of long-chain fatty acids. The encoded protein is also involved in the modulation of cell growth and proliferation. This protein binds saturated long-chain fatty acids with high affinity, and may act as a lipid sensor to maintain energy homeostasis.

**Immunogen:** Fusion protein of human FABP2

**Applications:** ELISA, WB, IHC

**Recommended Dilutions:** IHC: 50-200;WB: 1000-5000;ELISA: 5000-10000

**Host Species:** Rabbit

**Clonality:** Rabbit Polyclonal

**Isotype:** Immunogen-specific rabbit IgG

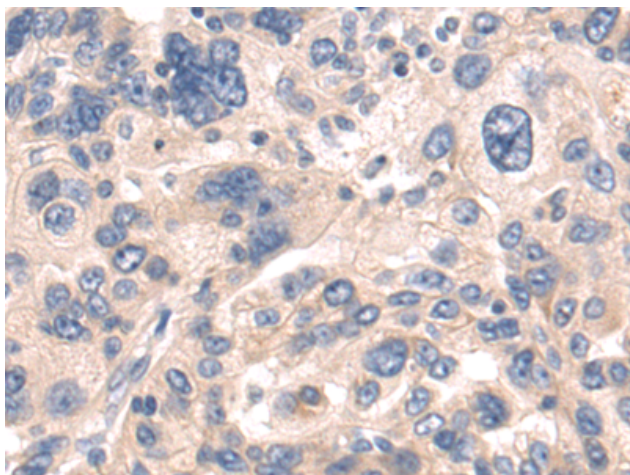
**Purification:** Antigen affinity purification

**Species Reactivity:** Human, Mouse, Rat

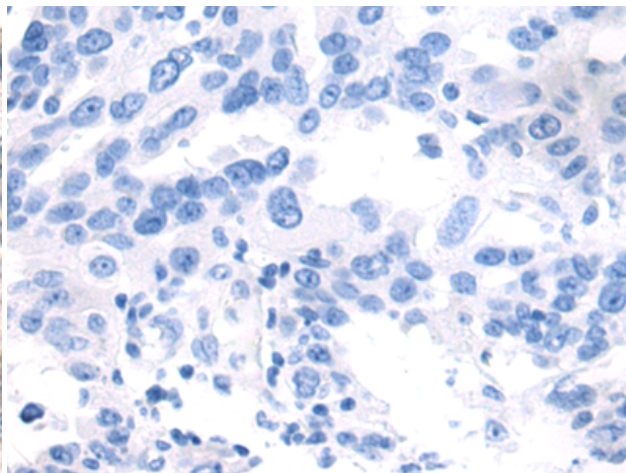
**Constituents:** PBS (without Mg<sup>2+</sup> and Ca<sup>2+</sup>), pH 7.4, 150 mM NaCl, 0.05% Sodium Azide and 40% glycerol

**Research Areas:** Metabolism, Cardiovascular

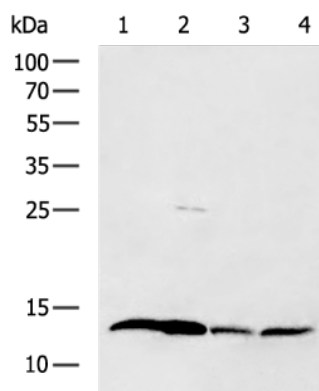
**Storage & Shipping:** Store at -20°C. Avoid repeated freezing and thawing



Immunohistochemistry analysis of paraffin embedded Human breast cancer tissue using 216507(FABP2 Antibody) at a dilution of 1/75(Cytoplasm).



In comparison with the IHC on the left, the same paraffin-embedded Human breast cancer tissue is first treated with the fusion protein and then with 216507(Anti-FABP2 Antibody) at dilution 1/75.



Gel: 12%SDS-PAGE, Lysate: 40 µg;  
 Lane 1-4: Mouse small intestines tissue, Mouse large intestines tissue, Human colorectal cancer tissue, Mouse fetal tissue lysates;  
 Primary antibody: 216507(FABP2 Antibody) at dilution 1/1000;  
 Secondary antibody: HRP-conjugated Goat anti rabbit IgG at 1/5000 dilution;  
 Exposure time: 2 seconds