

FAAP24 RABBIT PAB

Cat.#: S221994

Product Name: Anti-FAAP24 Rabbit Polyclonal Antibody

Synonyms: C19orf40

UNIPROT ID: Q9BTP7 (Gene Accession - NP_689479)

Background: Plays a role in DNA repair through recruitment of the FA core complex to damaged DNA. Regulates FANCD2 monoubiquitination upon DNA damage. Induces chromosomal instability as well as hypersensitivity to DNA cross-linking agents, when repressed. Targets FANCM/FAAP24 complex to the DNA, preferentially to single strand DNA.

Immunogen: Synthetic peptide of human FAAP24

Applications: ELISA, IHC

Recommended Dilutions: IHC: 20-100; ELISA: 5000-10000

Host Species: Rabbit

Clonality: Rabbit Polyclonal

Isotype: Immunogen-specific rabbit IgG

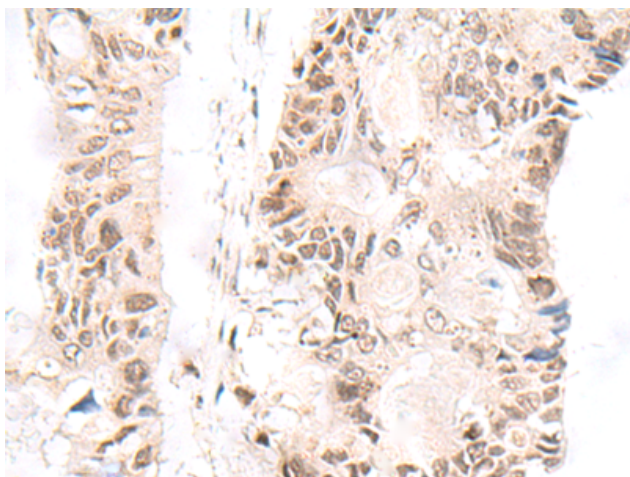
Purification: Antigen affinity purification

Species Reactivity: Human, Mouse

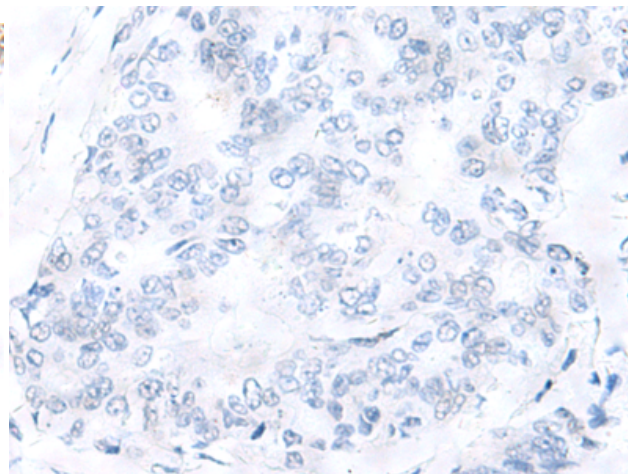
Constituents: PBS (without Mg²⁺ and Ca²⁺), pH 7.4, 150 mM NaCl, 0.05% Sodium Azide and 40% glycerol

Research Areas: Epigenetics and Nuclear Signaling

Storage & Shipping: Store at -20°C. Avoid repeated freezing and thawing



Immunohistochemistry analysis of paraffin embedded Human colorectal cancer tissue using 221994 (FAAP24 Antibody) at a dilution of 1/20 (Nucleus).



In comparison with the IHC on the left, the same paraffin-embedded Human colorectal cancer tissue is first treated with the synthetic peptide and then with 221994 (Anti-FAAP24 Antibody) at dilution 1/20.