

EXTRACELLULAR MATRIX PROTEIN 1 RABBIT MAB

Cat.#: N262198

Product Name: Anti-Extracellular Matrix Protein 1 Rabbit Monoclonal Antibody

Synonyms: ECM1; Extracellular matrix protein 1; Secretory component p85

UNIPROT ID: Q16610

Background: Involved in endochondral bone formation as negative regulator of bone mineralization. Stimulates the proliferation of endothelial cells and promotes angiogenesis. Inhibits MMP9 proteolytic activity.

Immunogen: A synthetic peptide of human Extracellular matrix protein 1

Applications: WB,IHC-F,IHC-P,ICC/IF,IP

Recommended Dilutions: WB: 1/500-1/1000 IHC: 1/50-1/100 IF: 1/50-1/200 IP: 1/20

Host Species: Rabbit

Clonality: Rabbit Monoclonal

Clone ID: R07-7E8

MW: Calculated MW: 61 kDa; Observed MW: 61 kDa

Isotype: IgG

Purification: Affinity Purified

Species Reactivity: Human

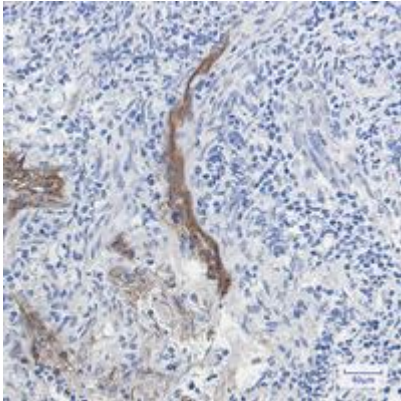
Conjugation: Unconjugated

Modification: Unmodified

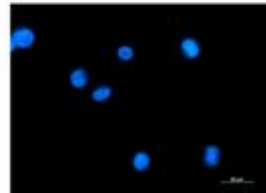
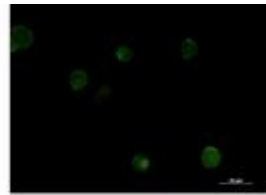
Constituents: PBS (without Mg²⁺ and Ca²⁺), pH 7.3 containing 50% glycerol, 0.5% BSA and 0.02% sodium azide

Research Areas: Immunology

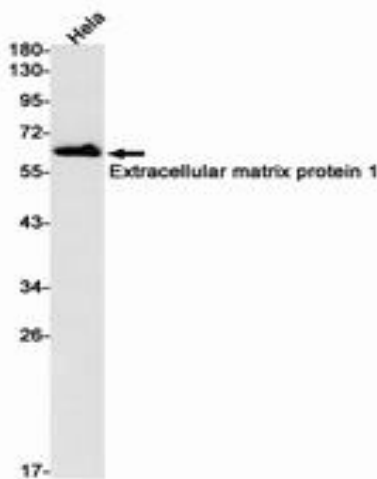
Storage & Shipping: Store at -20°C. Avoid repeated freezing and thawing



Immunohistochemistry analysis of paraffin-embedded Human tonsil using Extracellular matrix protein 1 antibody. High-pressure and temperature Sodium Citrate pH 6.0 was used for antigen retrieval.



Immunocytochemistry analysis of Extracellular Matrix Protein 1 (green) in K562 using Extracellular Matrix Protein 1 antibody, and DAPI (blue).



Western blot analysis of Extracellular matrix protein 1 in HeLa lysates using Extracellular matrix protein 1 antibody.