

## EXT1 RABBIT PAB

**Cat.#:** S218911

**Product Name:** Anti-EXT1 Rabbit Polyclonal Antibody

**Synonyms:** EXT; LGS; TTV; LGCR; TRPS2

**UNIPROT ID:** Q16394 (Gene Accession - BC001174 )

**Background:** This gene encodes an endoplasmic reticulum-resident type II transmembrane glycosyltransferase involved in the chain elongation step of heparan sulfate biosynthesis. Mutations in this gene cause the type I form of multiple exostoses.

**Immunogen:** Fusion protein of human EXT1

**Applications:** ELISA, IHC

**Recommended Dilutions:** IHC: 50-200; ELISA: 5000-10000

**Host Species:** Rabbit

**Clonality:** Rabbit Polyclonal

**Isotype:** Immunogen-specific rabbit IgG

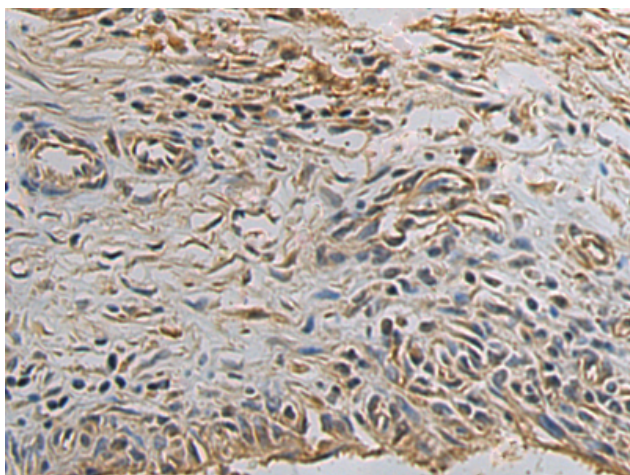
**Purification:** Antigen affinity purification

**Species Reactivity:** Human, Mouse

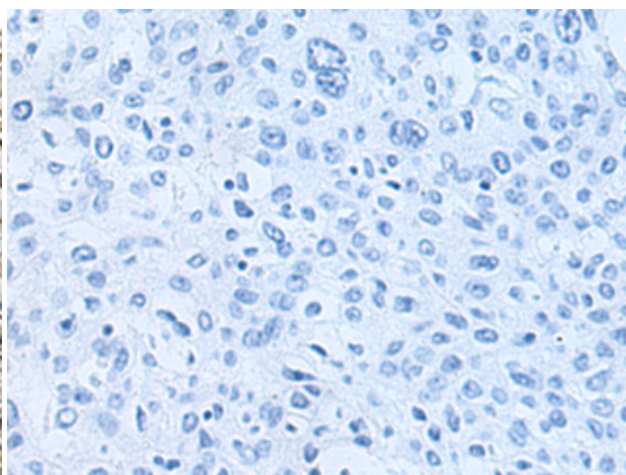
**Constituents:** PBS (without Mg<sup>2+</sup> and Ca<sup>2+</sup>), pH 7.4, 150 mM NaCl, 0.05% Sodium Azide and 40% glycerol

**Research Areas:** Signal Transduction

**Storage & Shipping:** Store at -20°C. Avoid repeated freezing and thawing



Immunohistochemistry analysis of paraffin embedded Human cervical cancer tissue using 218911(EXT1 Antibody) at a dilution of 1/100(Cytoplasm and Cell membrane).



In comparison with the IHC on the left, the same paraffin-embedded Human cervical cancer tissue is first treated with the fusion protein and then with 218911(Anti-EXT1 Antibody) at dilution 1/100.