

EXOCYST COMPLEX COMPONENT 3 RABBIT MAB

Cat.#: N262853

Product Name: Anti-Exocyst Complex Component 3 Rabbit Monoclonal Antibody

Synonyms: SEC6; Sec6p; SEC6L1

UNIPROT ID: O60645

Background: Component of the exocyst complex involved in the docking of exocytic vesicles with fusion sites on the plasma membrane.

Immunogen: A synthetic peptide of human rSec6

Applications: WB, ICC/IF, IP

Recommended Dilutions: WB: 1/500-1/1000 IF: 1/50-1/200 IP: 1/20

Host Species: Rabbit

Clonality: Rabbit Monoclonal

Clone ID: R07-4D7

MW: Calculated MW: 86 kDa; Observed MW: 86 kDa

Isotype: IgG

Purification: Affinity Purified

Species Reactivity: Human, Mouse, Rat

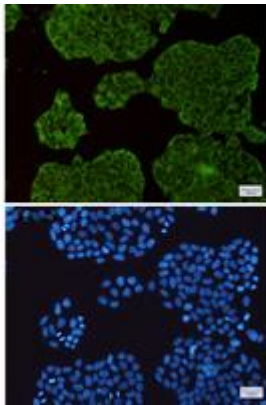
Conjugation: Unconjugated

Modification: Unmodified

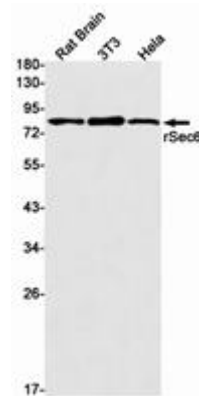
Constituents: PBS (without Mg²⁺ and Ca²⁺), pH 7.3 containing 50% glycerol, 0.5% BSA and 0.02% sodium azide

Research Areas: Signal Transduction

Storage & Shipping: Store at -20°C. Avoid repeated freezing and thawing



Immunocytochemistry analysis of rSec6 (green) in HeLa using rSec6 antibody, and DAPI (blue)



Western blot analysis of rSec6 in rat Brain, 3T3, HeLa lysates using Exocyst Complex Component 3 antibody.