

EWSR1 RABBIT MAB

Cat.#: N262196

Product Name: Anti-EWSR1 Rabbit Monoclonal Antibody

Synonyms: EWSR1; EWS; RNA-binding protein EWS; EWS oncogene; Ewing sarcoma breakpoint region 1 protein

UNIPROT ID: Q01844

Background: Might normally function as a repressor. EWS-fusion-proteins (EFPS) may play a role in the tumorigenic process. They may disturb gene expression by mimicking, or interfering with the normal function of CTD-POLII within the transcription initiation complex.

Immunogen: A synthetic peptide of human EWSR1

Applications: WB,ICC/IF

Recommended Dilutions: WB: 1/500-1/1000 IF: 1/50-1/200

Host Species: Rabbit

Clonality: Rabbit Monoclonal

Clone ID: R09-3A7

MW: Calculated MW: 68 kDa; Observed MW: 85 kDa

Isotype: IgG

Purification: Affinity Purified

Species Reactivity: Human,Mouse,Rat

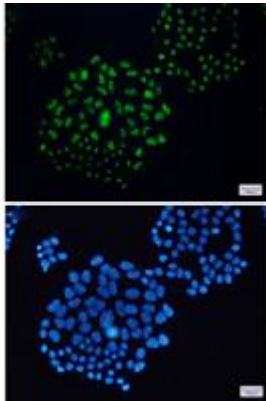
Conjugation: Unconjugated

Modification: Unmodified

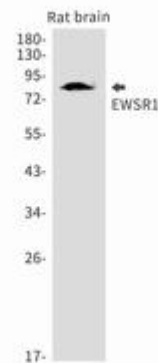
Constituents: PBS (without Mg²⁺ and Ca²⁺), pH 7.3 containing 50% glycerol, 0.5% BSA and 0.02% sodium azide

Research Areas: Tags & Cell Markers

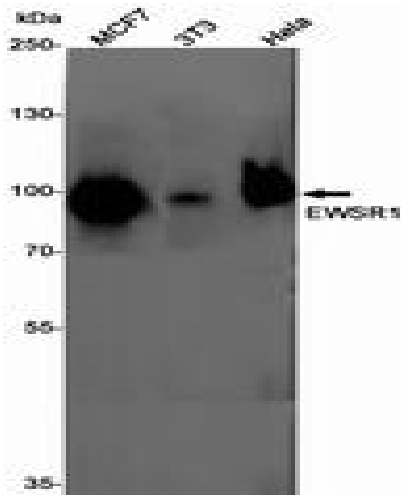
Storage & Shipping: Store at -20°C. Avoid repeated freezing and thawing



Immunocytochemistry analysis of EWSR1 (green) in Hela using EWSR1 antibody, and DAPI (blue)



Western blot analysis of EWSR1 in rat brain lysates using EWSR1 antibody.



Western blot analysis of EWSR1 in MCF-7, 3T3, Hela lysates using EWSR1 antibody.