

## EVX1 RABBIT PAB

**Cat.#:** S221987

**Product Name:** Anti-EVX1 Rabbit Polyclonal Antibody

**Synonyms:** EVX-1

**UNIPROT ID:** P49640 (Gene Accession - NP\_001980 )

**Background:** This gene encodes a member of the even-skipped homeobox family characterized by the presence of a homeodomain closely related to the Drosophila even-skipped (eve) segmentation gene of the pair-rule class. The encoded protein may play an important role as a transcriptional repressor during embryogenesis.

**Immunogen:** Synthetic peptide of human EVX1

**Applications:** ELISA, WB, IHC

**Recommended Dilutions:** IHC: 50-100;WB: 1000-5000;ELISA: 2000-5000

**Host Species:** Rabbit

**Clonality:** Rabbit Polyclonal

**Isotype:** Immunogen-specific rabbit IgG

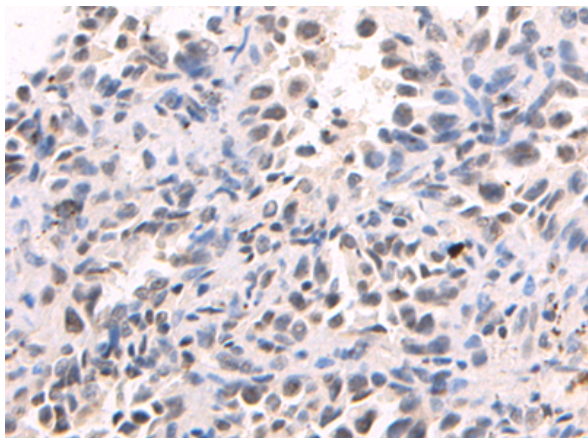
**Purification:** Antigen affinity purification

**Species Reactivity:** Human, Mouse

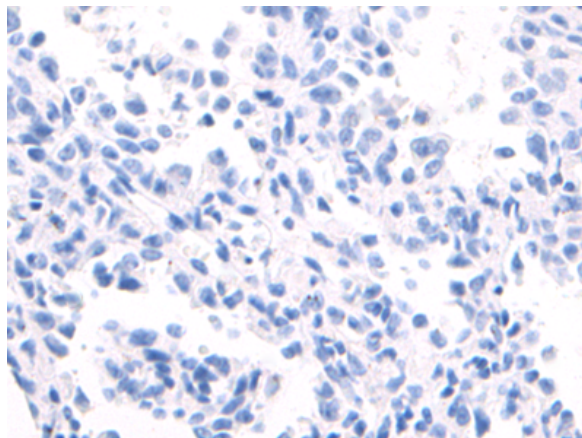
**Constituents:** PBS (without Mg<sup>2+</sup> and Ca<sup>2+</sup>), pH 7.4, 150 mM NaCl, 0.05% Sodium Azide and 40% glycerol

**Research Areas:** Epigenetics and Nuclear Signaling

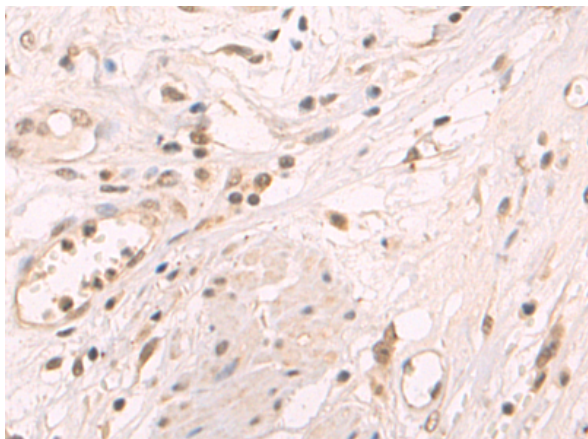
**Storage & Shipping:** Store at -20°C. Avoid repeated freezing and thawing



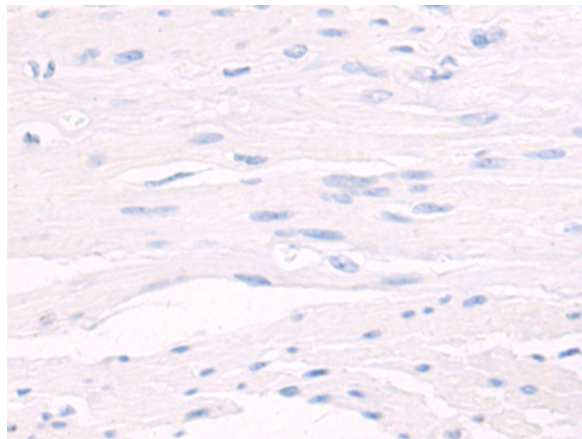
Immunohistochemistry analysis of paraffin embedded Human thyroid cancer tissue using 221987(EVX1 Antibody) at a dilution of 1/50(Nucleus).



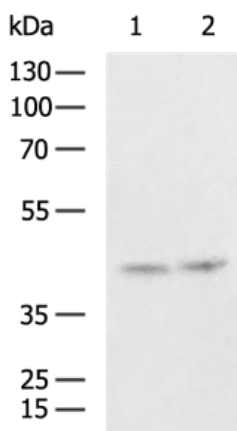
In comparison with the IHC on the left, the same paraffin-embedded Human thyroid cancer tissue is first treated with the synthetic peptide and then with 221987(Anti-EVX1 Antibody) at dilution 1/50.



The image on the left is immunohistochemistry of paraffin-embedded Human prostate cancer tissue using 221987(Anti-EVX1 Antibody) at a dilution of 1/50.



In comparison with the IHC on the left, the same paraffin-embedded Human prostate cancer tissue is first treated with synthetic peptide and then with D263840(Anti-EVX1 Antibody) at dilution 1/50.



Gel: 8%SDS-PAGE, Lysate: 40 µg;  
 Lane 1-2: MCF7 and SKOV3 cell lysates;  
 Primary antibody: 221987(EVX1 Antibody) at dilution 1/1100;  
 Secondary antibody: HRP-conjugated Goat anti rabbit IgG at 1/5000 dilution;  
 Exposure time: 40 seconds



# Product Description

Pioneering GTPase and Oncogene Product Development since 2010

---