

EVL RABBIT PAB

Cat.#: S219388

Product Name: Anti-EVL Rabbit Polyclonal Antibody

Synonyms: RNB6

UNIPROT ID: Q9UI08 (Gene Accession - BC032358)

Background: Ena/VASP proteins are actin-associated proteins involved in a range of processes dependent on cytoskeleton remodeling and cell polarity such as axon guidance and lamellipodial and filopodial dynamics in migrating cells. EVL enhances actin nucleation and polymerization.

Immunogen: Fusion protein of human EVL

Applications: ELISA, WB, IHC

Recommended Dilutions: IHC: 50-200;WB: 1000-5000;ELISA: 5000-10000

Host Species: Rabbit

Clonality: Rabbit Polyclonal

Isotype: Immunogen-specific rabbit IgG

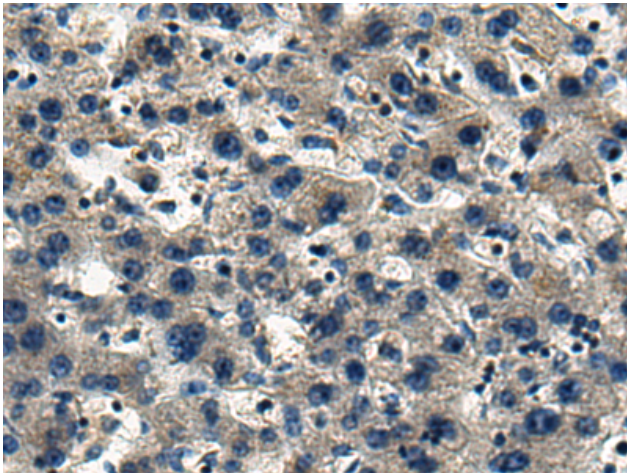
Purification: Antigen affinity purification

Species Reactivity: Human, Mouse, Rat

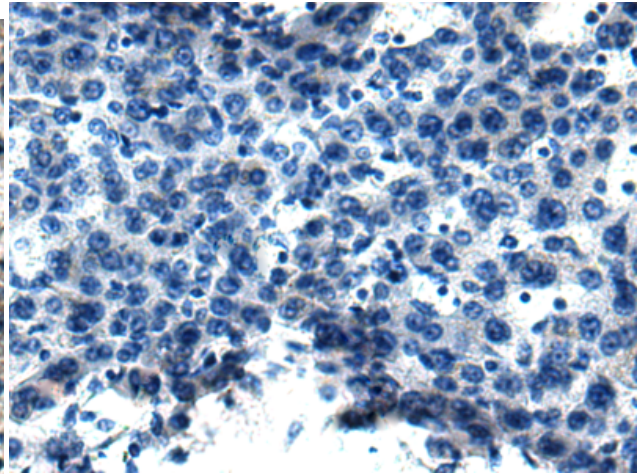
Constituents: PBS (without Mg²⁺ and Ca²⁺), pH 7.4, 150 mM NaCl, 0.05% Sodium Azide and 40% glycerol

Research Areas: Signal Transduction

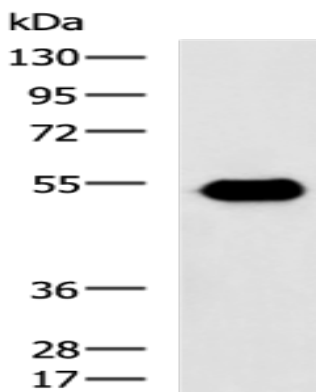
Storage & Shipping: Store at -20°C. Avoid repeated freezing and thawing



Immunohistochemistry analysis of paraffin embedded Human liver cancer tissue using 219388 (EVL Antibody) at a dilution of 1/140 (Cytoplasm).



In comparison with the IHC on the left, the same paraffin-embedded Human liver cancer tissue is first treated with the fusion protein and then with 219388 (Anti-EVL Antibody) at dilution 1/140.



Gel: 8% SDS-PAGE, Lysate: 40 μ g;
Lane: RAMOS cell lysate;
Primary antibody: 219388 (EVL Antibody) at dilution 1/1000;
Secondary antibody: HRP-conjugated Goat anti rabbit IgG at 1/5000 dilution;
Exposure time: 3 minutes