

EVI2B RABBIT PAB

Cat.#: S221986

Product Name: Anti-EVI2B Rabbit Polyclonal Antibody

Synonyms: EVDB; CD361; D17S376

UNIPROT ID: P34910 (Gene Accession - NP_006486)

Background: Involved in positive regulation of granulocyte differentiation. Predicted to be integral component of plasma membrane.

Immunogen: Synthetic peptide of human EVI2B

Applications: ELISA, WB, IHC

Recommended Dilutions: IHC: 50-200;WB: 500-2000;ELISA: 5000-10000

Host Species: Rabbit

Clonality: Rabbit Polyclonal

Isotype: Immunogen-specific rabbit IgG

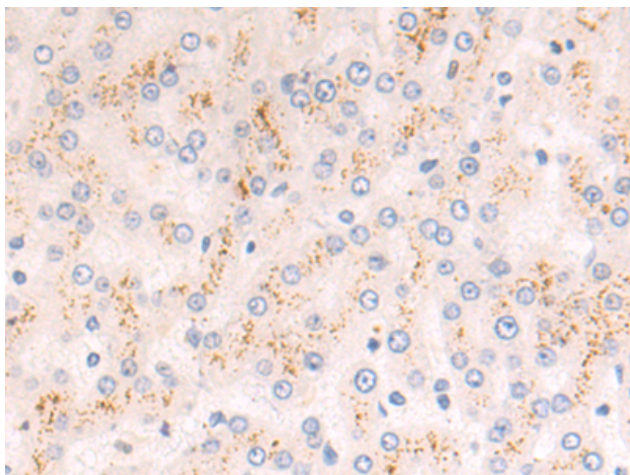
Purification: Antigen affinity purification

Species Reactivity: Human, Mouse

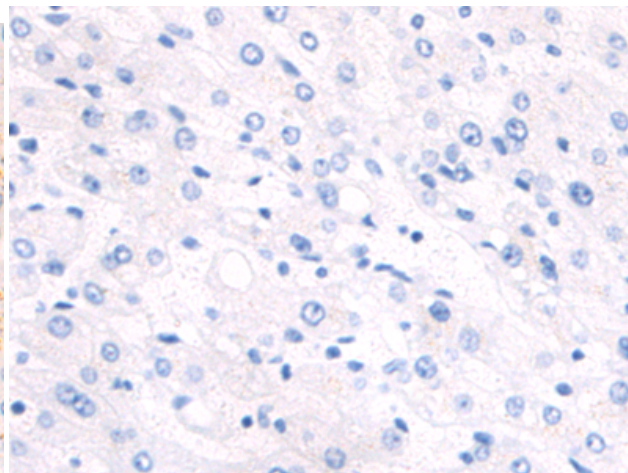
Constituents: PBS (without Mg²⁺ and Ca²⁺), pH 7.4, 150 mM NaCl, 0.05% Sodium Azide and 40% glycerol

Research Areas: Cell Biology

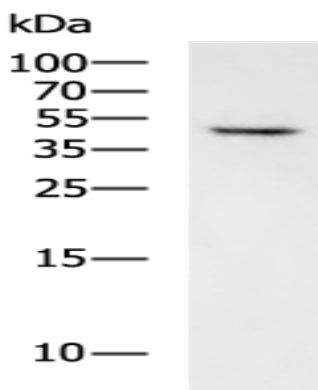
Storage & Shipping: Store at -20°C. Avoid repeated freezing and thawing



Immunohistochemistry analysis of paraffin embedded Human liver cancer tissue using 221986(EVI2B Antibody) at a dilution of 1/50(Cytoplasm).



In comparison with the IHC on the left, the same paraffin-embedded Human liver cancer tissue is first treated with the synthetic peptide and then with 221986(Anti-EVI2B Antibody) at dilution 1/50.



Gel: 12%SDS-PAGE, Lysate: 40 μ g;
Lane: U251 cell lysate;
Primary antibody: 221986(EVI2B Antibody) at dilution 1/800;
Secondary antibody: HRP-conjugated Goat anti rabbit IgG at 1/5000 dilution;
Exposure time: 10 seconds