

EVC2 RABBIT PAB

Cat.#: S220535

Product Name: Anti-EVC2 Rabbit Polyclonal Antibody

Synonyms: LBN; WAD

UNIPROT ID: Q86UK5 (Gene Accession - NP_001159608)

Background: This gene encodes a protein that functions in bone formation and skeletal development. Mutations in this gene, as well as in a neighboring gene that lies in a head-to-head configuration, cause Ellis-van Creveld syndrome, an autosomal recessive skeletal dysplasia that is also known as chondroectodermal dysplasia. Mutations in this gene also cause acrofacial dysostosis Weyers type, also referred to as Curry-Hall syndrome, a disease that combines limb and facial abnormalities. Alternative splicing results in multiple transcript variants.

Immunogen: Synthetic peptide of human EVC2

Applications: ELISA, WB, IHC

Recommended Dilutions: IHC: 50-300;WB: 500-2000;ELISA: 2000-5000

Host Species: Rabbit

Clonality: Rabbit Polyclonal

Isotype: Immunogen-specific rabbit IgG

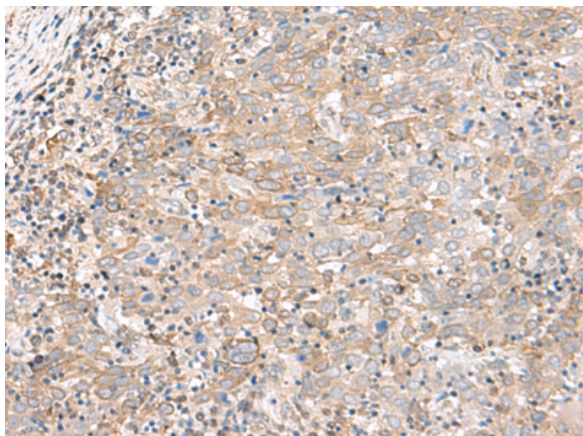
Purification: Antigen affinity purification

Species Reactivity: Human, Mouse

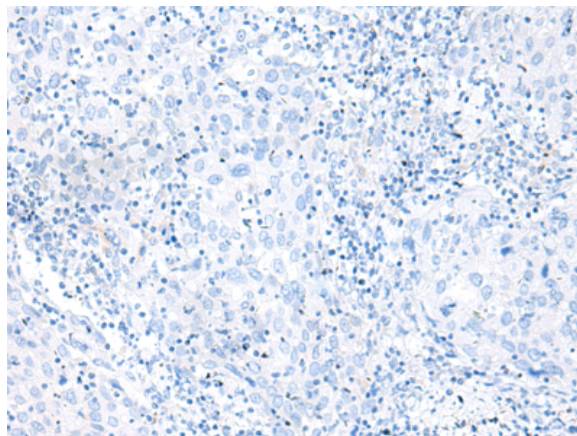
Constituents: PBS (without Mg²⁺ and Ca²⁺), pH 7.4, 150 mM NaCl, 0.05% Sodium Azide and 40% glycerol

Research Areas: Cell Biology

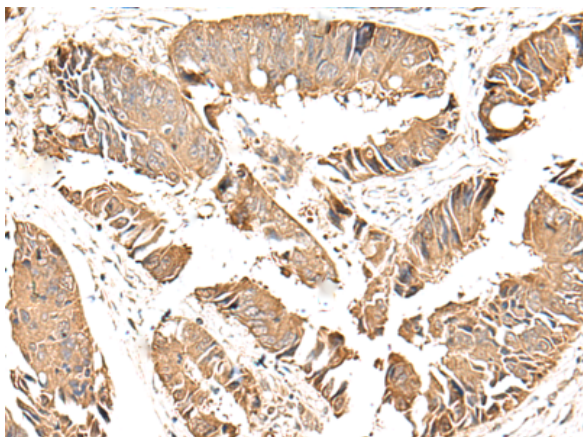
Storage & Shipping: Store at -20°C. Avoid repeated freezing and thawing



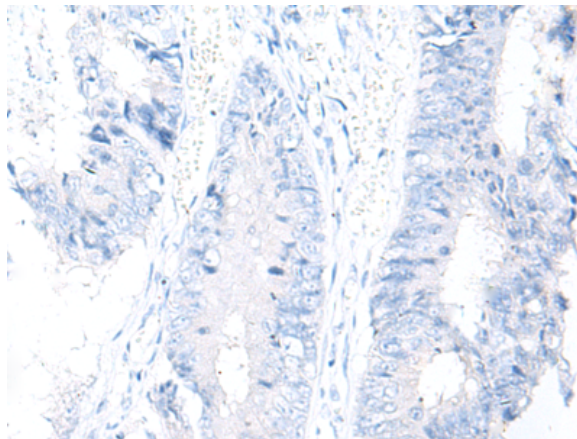
Immunohistochemistry analysis of paraffin embedded Human cervical cancer tissue using 220535(EVC2 Antibody) at a dilution of 1/75(Cytoplasm and Cell membrane).



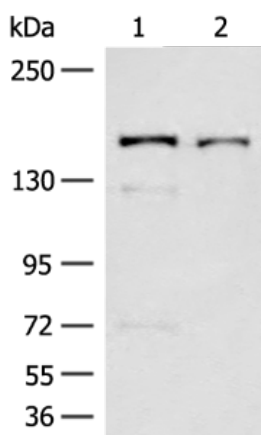
In comparison with the IHC on the left, the same paraffin-embedded Human cervical cancer tissue is first treated with the synthetic peptide and then with 220535(Anti-EVC2 Antibody) at dilution 1/75.



The image on the left is immunohistochemistry of paraffin-embedded Human colorectal cancer tissue using 220535(Anti-EVC2 Antibody) at a dilution of 1/75.



In comparison with the IHC on the left, the same paraffin-embedded Human colorectal cancer tissue is first treated with synthetic peptide and then with D261664(Anti-EVC2 Antibody) at dilution 1/75.



Gel: 6%SDS-PAGE, Lysate: 40 µg;
Lane 1-2: Raji and A375 cell lysates;
Primary antibody: 220535(EVC2 Antibody) at dilution 1/500;
Secondary antibody: Goat anti rabbit IgG at 1/8000 dilution;
Exposure time: 30 seconds



Product Description

Pioneering GTPase and Oncogene Product Development since 2010
