

ETHE1 RABBIT PAB

Cat.#: S217413

Product Name: Anti-ETHE1 Rabbit Polyclonal Antibody

Synonyms: HSCO; YF13H12

UNIPROT ID: O95571 (Gene Accession - NP_055112)

Background: This gene encodes a sulfur dioxygenase that localizes within the mitochondrial matrix. The enzyme functions in sulfide catabolism. Mutations in this gene result in ethylmalonic encephalopathy.

Immunogen: Fusion protein of human ETHE1

Applications: ELISA, WB, IHC

Recommended Dilutions: IHC: 25-100;WB: 200-1000;ELISA: 1000-2000

Host Species: Rabbit

Clonality: Rabbit Polyclonal

Isotype: Immunogen-specific rabbit IgG

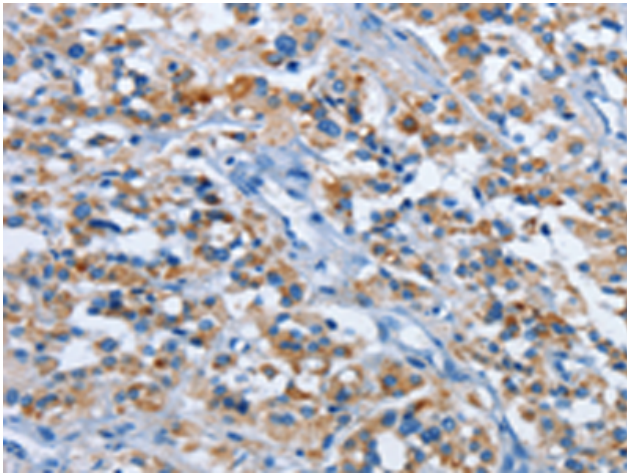
Purification: Antigen affinity purification

Species Reactivity: Human, Mouse

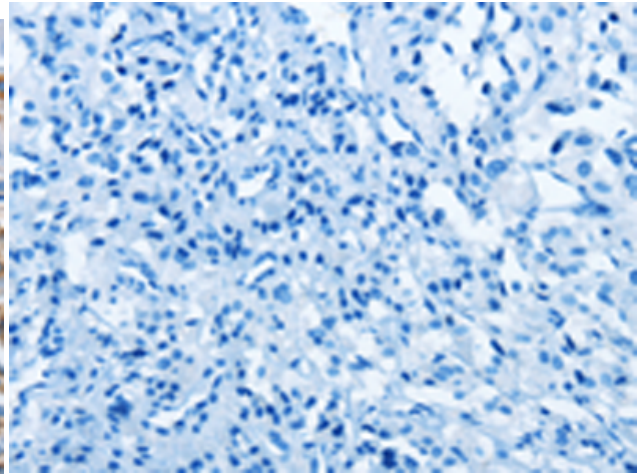
Constituents: PBS (without Mg²⁺ and Ca²⁺), pH 7.4, 150 mM NaCl, 0.05% Sodium Azide and 40% glycerol

Research Areas: Metabolism, Cancer

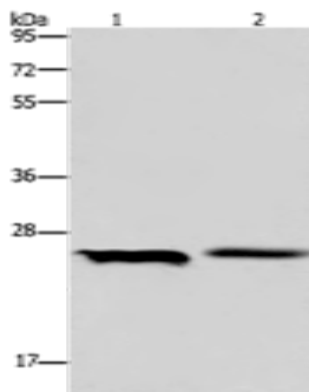
Storage & Shipping: Store at -20°C. Avoid repeated freezing and thawing



Immunohistochemistry analysis of paraffin embedded Human thyroid cancer tissue using 217413(ETHE1 Antibody) at a dilution of 1/20(Cytoplasm).



In comparison with the IHC on the left, the same paraffin-embedded Human thyroid cancer tissue is first treated with the fusion protein and then with 217413(Anti-ETHE1 Antibody) at dilution 1/20.



Gel: 10%SDS-PAGE, Lysate: 40 μ g;
Lane 1-2: A549 cells, mouse liver tissue;
Primary antibody: 217413(ETHE1 Antibody) at dilution 1/200;
Secondary antibody: Goat anti rabbit IgG at 1/8000 dilution;
Exposure time: 40 seconds