

ESRP2 RABBIT PAB

Cat.#: S221980

Product Name: Anti-ESRP2 Rabbit Polyclonal Antibody

Synonyms: RBM35B

UNIPROT ID: Q9H6T0 (Gene Accession - NP_079215)

Background: ESRP2 is an epithelial cell-type-specific splicing regulator (Warzecha et al., 2009 [PubMed 19285943]).

Immunogen: Synthetic peptide of human ESRP2

Applications: ELISA, IHC

Recommended Dilutions: IHC: 50–300; ELISA: 5000–10000

Host Species: Rabbit

Clonality: Rabbit Polyclonal

Isotype: Immunogen-specific rabbit IgG

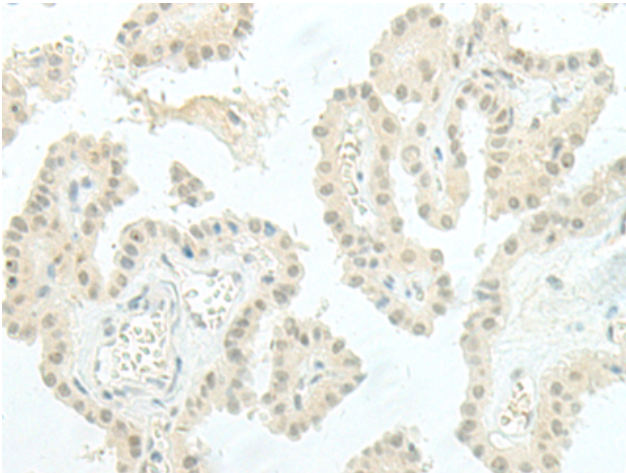
Purification: Antigen affinity purification

Species Reactivity: Human, Mouse, Rat

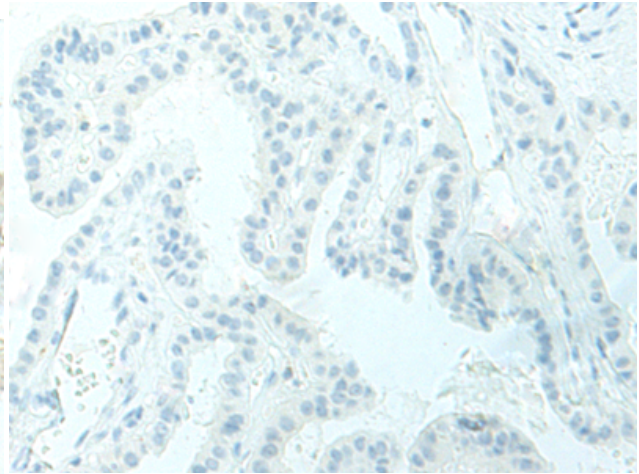
Constituents: PBS (without Mg²⁺ and Ca²⁺), pH 7.4, 150 mM NaCl, 0.05% Sodium Azide and 40% glycerol

Research Areas: Epigenetics and Nuclear Signaling, Immunology

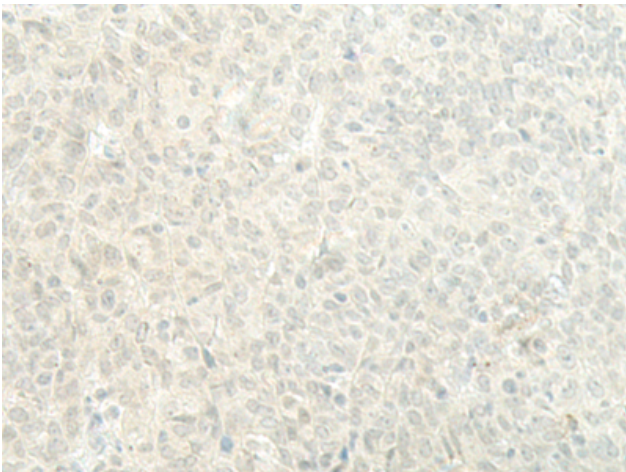
Storage & Shipping: Store at –20°C. Avoid repeated freezing and thawing



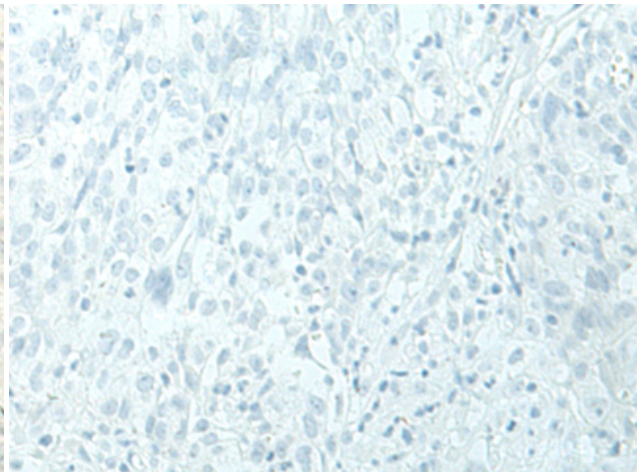
Immunohistochemistry analysis of paraffin embedded Human thyroid cancer tissue using 221980(ESRP2 Antibody) at a dilution of 1/95(Nucleus).



In comparison with the IHC on the left, the same paraffin-embedded Human thyroid cancer tissue is first treated with the synthetic peptide and then with 221980(Anti-ESRP2 Antibody) at dilution 1/95.



The image on the left is immunohistochemistry of paraffin-embedded Human ovarian cancer tissue using 221980(Anti-ESRP2 Antibody) at a dilution of 1/95.



In comparison with the IHC on the left, the same paraffin-embedded Human ovarian cancer tissue is first treated with synthetic peptide and then with D263833(Anti-ESRP2 Antibody) at dilution 1/95.