

ESCO1 RABBIT PAB

Cat.#: S215695

Product Name: Anti-ESCO1 Rabbit Polyclonal Antibody

Synonyms: CTF; ECO1; EFO1; ESO1; A930014I12Rik

UNIPROT ID: Q5FWF5 (Gene Accession - NP_443143)

Background: ESCO1 belongs to a conserved family of acetyltransferases involved in sister chromatid cohesion (Hou and Zou, 2005 [PubMed 15958495]).

Immunogen: Synthetic peptide of human ESCO1

Applications: ELISA, IHC

Recommended Dilutions: IHC: 20-100; ELISA: 5000-10000

Host Species: Rabbit

Clonality: Rabbit Polyclonal

Isotype: Immunogen-specific rabbit IgG

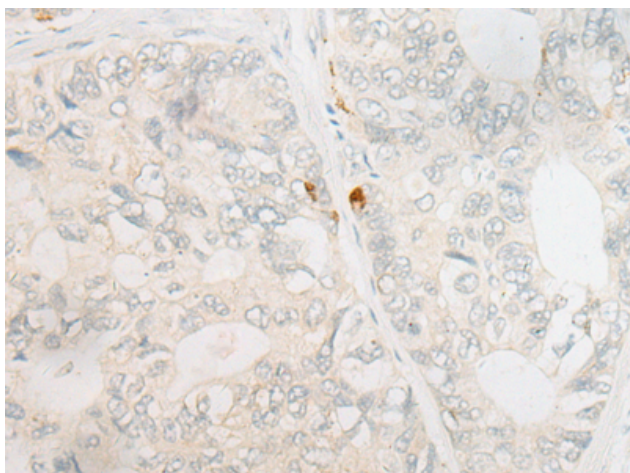
Purification: Antigen affinity purification

Species Reactivity: Human

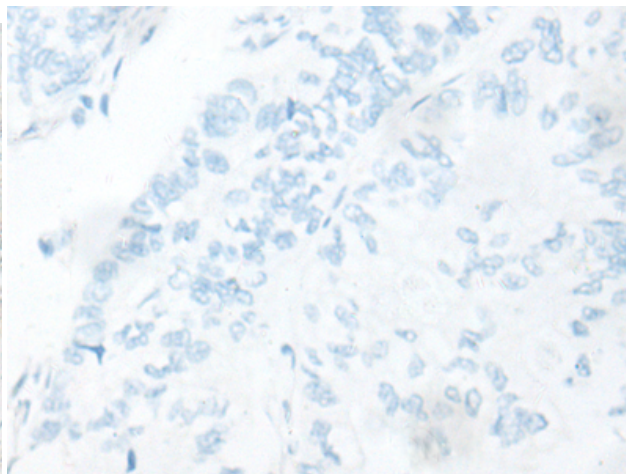
Constituents: PBS (without Mg²⁺ and Ca²⁺), pH 7.4, 150 mM NaCl, 0.05% Sodium Azide and 40% glycerol

Research Areas: Epigenetics and Nuclear Signaling

Storage & Shipping: Store at -20°C. Avoid repeated freezing and thawing



Immunohistochemistry analysis of paraffin embedded Human gastric cancer tissue using 215695(ESCO1 Antibody) at a dilution of 1/20(Cytoplasm and Nucleus).



In comparison with the IHC on the left, the same paraffin-embedded Human gastric cancer tissue is first treated with the synthetic peptide and then with 215695(Anti-ESCO1 Antibody) at dilution 1/20.