

## ERRF11 RABBIT PAB

**Cat.#:** S220713

**Product Name:** Anti-ERRF11 Rabbit Polyclonal Antibody

**Synonyms:** MIG6; RALT; MIG-6; GENE-33

**UNIPROT ID:** Q9UJM3 (Gene Accession - NP\_061821)

**Background:** ERRF11 is a cytoplasmic protein whose expression is upregulated with cell growth. It shares significant homology with the protein product of rat gene-33, which is induced during cell stress and mediates cell signaling.

**Immunogen:** Synthetic peptide of human ERRF11

**Applications:** ELISA, WB, IHC

**Recommended Dilutions:** IHC: 50-100;WB: 500-2000;ELISA: 5000-10000

**Host Species:** Rabbit

**Clonality:** Rabbit Polyclonal

**Isotype:** Immunogen-specific rabbit IgG

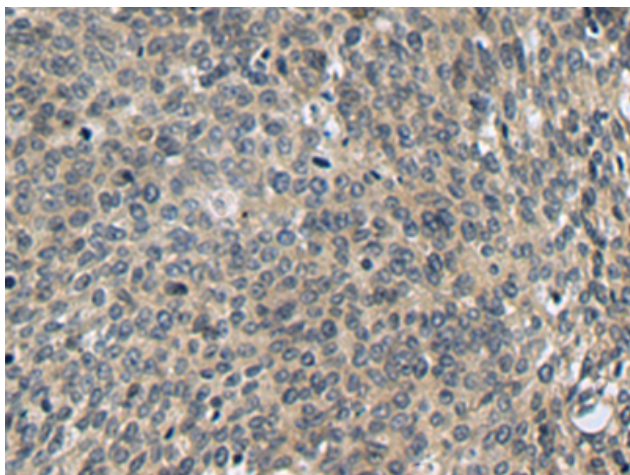
**Purification:** Antigen affinity purification

**Species Reactivity:** Human, Mouse

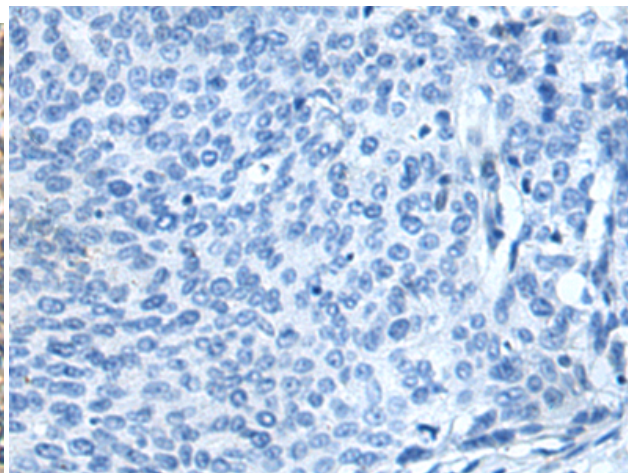
**Constituents:** PBS (without Mg<sup>2+</sup> and Ca<sup>2+</sup>), pH 7.4, 150 mM NaCl, 0.05% Sodium Azide and 40% glycerol

**Research Areas:** Signal Transduction, Cancer, Cardiovascular

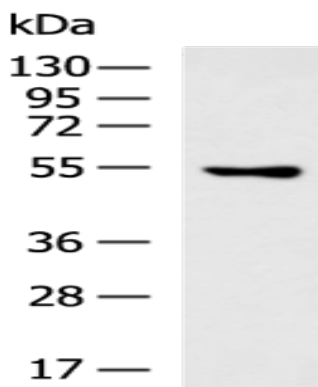
**Storage & Shipping:** Store at -20°C. Avoid repeated freezing and thawing



Immunohistochemistry analysis of paraffin embedded Human cervical cancer tissue using 220713(ERFII Antibody) at a dilution of 1/40(Cytoplasm).



In comparison with the IHC on the left, the same paraffin-embedded Human cervical cancer tissue is first treated with the synthetic peptide and then with 220713(Anti-ERFII Antibody) at dilution 1/40.



Gel: 8%SDS-PAGE, Lysate: 40  $\mu$ g;  
Lane: Mouse pancreas tissue lysate;  
Primary antibody: 220713(ERFII Antibody) at dilution 1/500;  
Secondary antibody: HRP-conjugated Goat anti rabbit IgG at 1/5000 dilution;  
Exposure time: 1 minute