

## ERP29 RABBIT PAB

**Cat.#:** S214316

**Product Name:** Anti-ERP29 Rabbit Polyclonal Antibody

**Synonyms:** ERp28; ERp31; PDIA9; PDI-DB; C12orf8

**UNIPROT ID:** P30040 (Gene Accession - NP\_006808 )

**Background:** This gene encodes a reticuloplasmin, a protein which resides in the lumen of the endoplasmic reticulum (ER). The protein shows sequence similarity to the protein disulfide isomerase family. However, it lacks the thioredoxin motif characteristic of this family, suggesting that this protein does not function as a disulfide isomerase. The protein dimerizes and is thought to play a role in the processing of secretory proteins within the ER. Alternative splicing results in multiple transcript variants encoding different isoforms

**Immunogen:** Synthetic peptide of human ERP29

**Applications:** ELISA, WB, IHC

**Recommended Dilutions:** IHC: 50-200;WB: 500-2000;ELISA: 2000-5000

**Host Species:** Rabbit

**Clonality:** Rabbit Polyclonal

**Isotype:** Immunogen-specific rabbit IgG

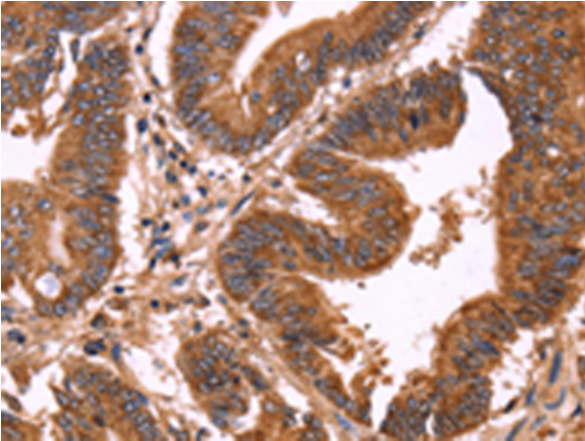
**Purification:** Antigen affinity purification

**Species Reactivity:** Human, Mouse, Rat

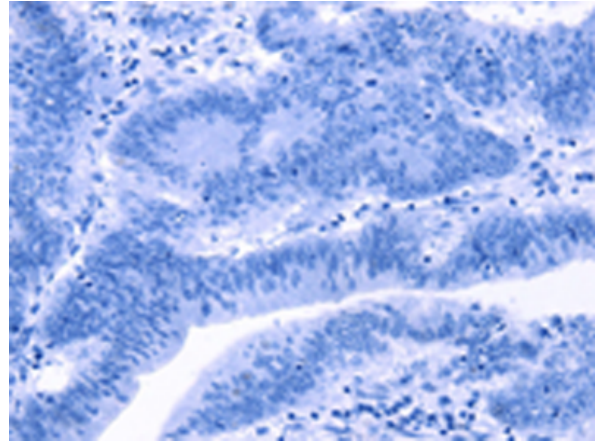
**Constituents:** PBS (without Mg<sup>2+</sup> and Ca<sup>2+</sup>), pH 7.4, 150 mM NaCl, 0.05% Sodium Azide and 40% glycerol

**Research Areas:** Signal Transduction

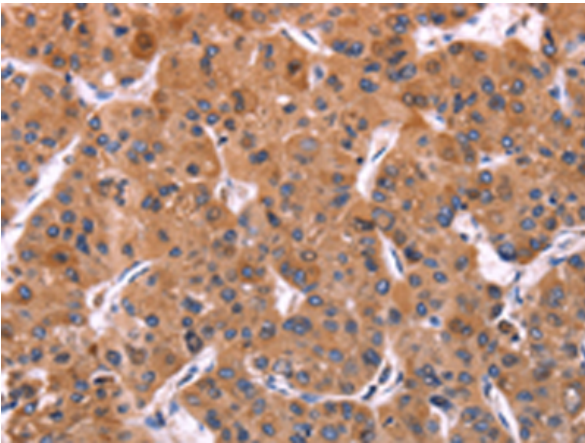
**Storage & Shipping:** Store at -20°C. Avoid repeated freezing and thawing



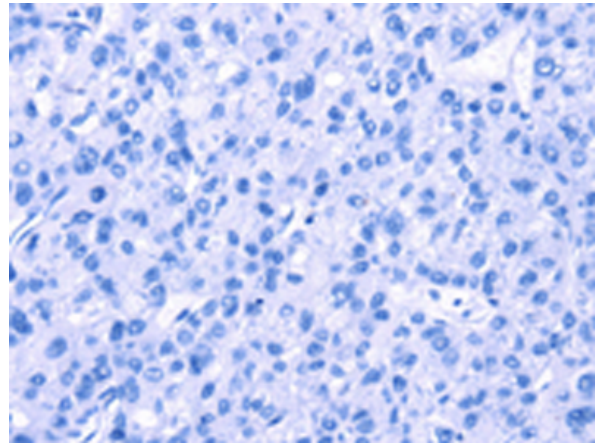
Immunohistochemistry analysis of paraffin embedded Human colon cancer tissue using 214316(ERP29 Antibody) at a dilution of 1/40(Cytoplasm).



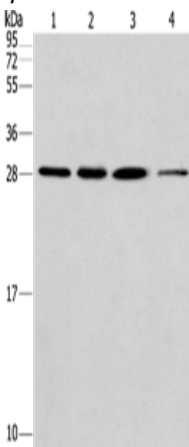
In comparison with the IHC on the left, the same paraffin-embedded Human colon cancer tissue is first treated with the synthetic peptide and then with 214316(Anti-ERP29 Antibody) at dilution 1/40.



The image on the left is immunohistochemistry of paraffin-embedded Human liver cancer tissue using 214316(Anti-ERP29 Antibody) at a dilution of 1/40.



In comparison with the IHC on the left, the same paraffin-embedded Human liver cancer tissue is first treated with synthetic peptide and then with D161659(Anti-ERP29 Antibody) at dilution 1/40.



Gel: 10%SDS-PAGE, Lysate: 40 µg;  
 Lane 1-4: Hela cells, human fetal liver tissue, A549 cells, 293T cells;  
 Primary antibody: 214316(ERP29 Antibody) at dilution 1/200;  
 Secondary antibody: Goat anti rabbit IgG at 1/8000 dilution;  
 Exposure time: 40 seconds



# Product Description

Pioneering GTPase and Oncogene Product Development since 2010

---