

ERCC3 RABBIT PAB

Cat.#: S218273

Product Name: Anti-ERCC3 Rabbit Polyclonal Antibody

Synonyms: XPB; BTF2; Ssl2; TTD2; GTF2H; RAD25; TFIIH

UNIPROT ID: P19447 (Gene Accession - BC008820)

Background: ATP-dependent 3'-5' DNA helicase, component of the general transcription and DNA repair factor IIIH (TFIIH) core complex which is involved in general and transcription-coupled nucleotide excision repair (NER) of damaged DNA and, when complexed to CAK, in RNA transcription by RNA polymerase II. In NER, TFIIH acts by opening DNA around the lesion to allow the excision of the damaged oligonucleotide and its replacement by a new DNA fragment. The ATPase activity of XPB/ERCC3, but not its helicase activity, is required for DNA opening. In transcription, TFIIH has an essential role in transcription initiation (PubMed:8157004, PubMed:30894545). When the pre-initiation complex (PIC) has been established, TFIIH is required for promoter opening and promoter escape (PubMed:8157004). The ATP-dependent helicase activity of XPB/ERCC3 is required for promoter opening and promoter escape. Phosphorylation of the C-terminal tail (CTD) of the largest subunit of RNA polymerase II by the kinase module CAK controls the initiation of transcription.

Immunogen: Fusion protein of human ERCC3

Applications: ELISA, WB, IHC

Recommended Dilutions: IHC: 50-200;WB: 1000-5000;ELISA: 5000-10000

Host Species: Rabbit

Clonality: Rabbit Polyclonal

Isotype: Immunogen-specific rabbit IgG

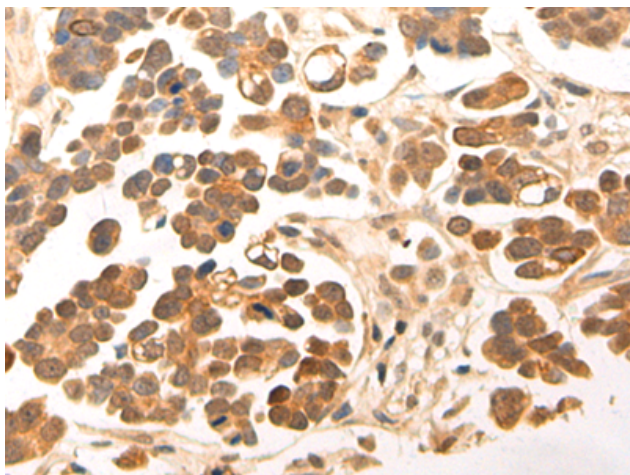
Purification: Antigen affinity purification

Species Reactivity: Human, Mouse, Rat

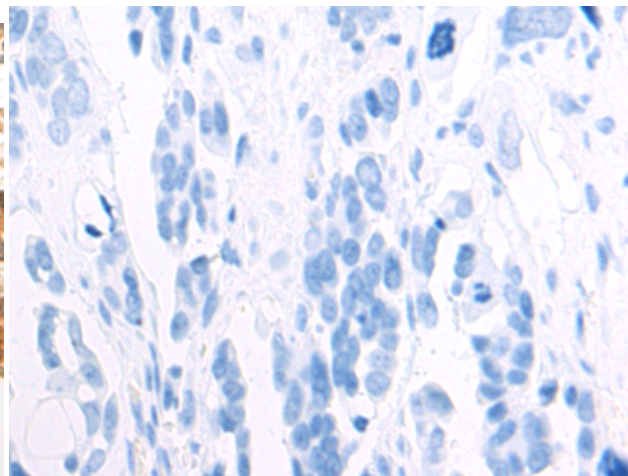
Constituents: PBS (without Mg²⁺ and Ca²⁺), pH 7.4, 150 mM NaCl, 0.05% Sodium Azide and 40% glycerol

Research Areas: Epigenetics and Nuclear Signaling, Cancer, Metabolism, Cardiovascular

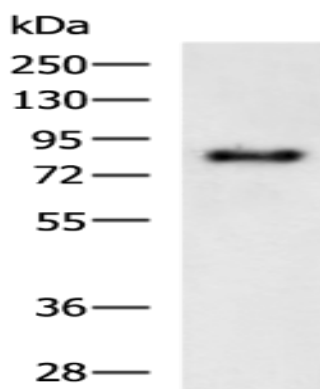
Storage & Shipping: Store at -20°C. Avoid repeated freezing and thawing



Immunohistochemistry analysis of paraffin embedded Human colorectal cancer tissue using 218273(ERCC3 Antibody) at a dilution of 1/70(Nucleus).



In comparison with the IHC on the left, the same paraffin-embedded Human colorectal cancer tissue is first treated with the fusion protein and then with 218273(Anti-ERCC3 Antibody) at dilution 1/70.



Gel: 8%SDS-PAGE, Lysate: 40 μ g;
Lane: HeLa cell lysate;
Primary antibody: 218273(ERCC3 Antibody) at dilution 1/1000;
Secondary antibody: HRP-conjugated Goat anti rabbit IgG at 1/5000 dilution;
Exposure time: 3 seconds