

## EPSTI1 RABBIT PAB

**Cat.#:** S217406

**Product Name:** Anti-EPSTI1 Rabbit Polyclonal Antibody

**Synonyms:** BRESI1

**UNIPROT ID:** Q96J88 (Gene Accession - BC023660 )

**Background:** The protein encoded by this gene has been shown to promote tumor invasion and metastasis in some invasive cancer cells when overexpressed. Expression of this gene has been shown to be upregulated by direct binding of the Kruppel like factor 8 protein to promoter sequences. The translated protein interacts with the amino terminal region of the valosin containing protein gene product, resulting in the nuclear translocation of the nuclear factor kappa B subunit 1 gene product, and activation of target genes. Overexpression of this gene has been observed in some breast cancers and in some individuals with systemic lupus erythematosus (SLE). [provided by RefSeq, Sep 2016]

**Immunogen:** Fusion protein of human EPSTI1

**Applications:** ELISA, WB, IHC

**Recommended Dilutions:** IHC: 100-200;WB: 500-2000;ELISA: 5000-10000

**Host Species:** Rabbit

**Clonality:** Rabbit Polyclonal

**Isotype:** Immunogen-specific rabbit IgG

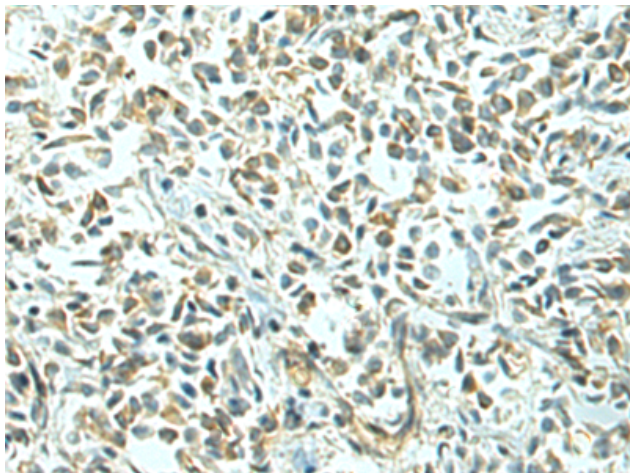
**Purification:** Antigen affinity purification

**Species Reactivity:** Human

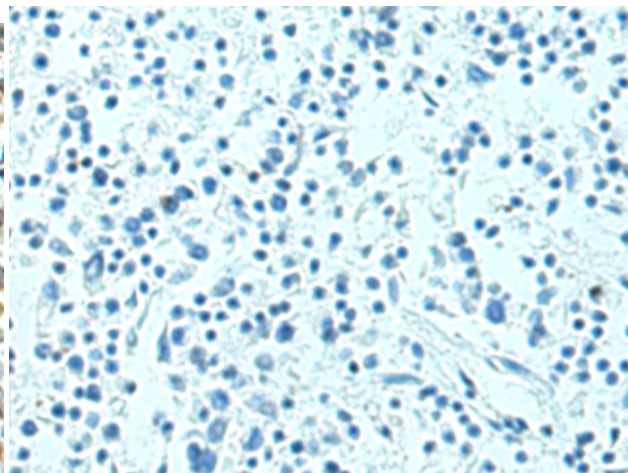
**Constituents:** PBS (without Mg<sup>2+</sup> and Ca<sup>2+</sup>), pH 7.4, 150 mM NaCl, 0.05% Sodium Azide and 40% glycerol

**Research Areas:** Cancer

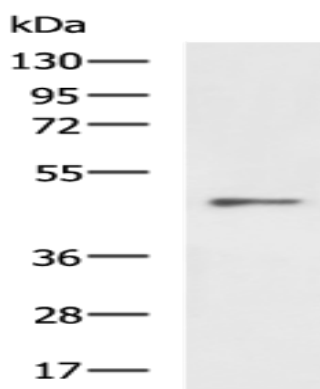
**Storage & Shipping:** Store at -20°C. Avoid repeated freezing and thawing



Immunohistochemistry analysis of paraffin embedded Human breast cancer tissue using 217406(EPSTII Antibody) at a dilution of 1/160(Cytoplasm).



In comparison with the IHC on the left, the same paraffin-embedded Human breast cancer tissue is first treated with the fusion protein and then with 217406(Anti-EPSTII Antibody) at dilution 1/160.



Gel: 8%SDS-PAGE, Lysate: 40  $\mu$ g;  
Lane: HepG2 cell lysate;  
Primary antibody: 217406(EPSTII Antibody) at dilution 1/1000;  
Secondary antibody: HRP-conjugated Goat anti rabbit IgG at 1/5000 dilution;  
Exposure time: 1 minute