

## EPS15R RABBIT MAB

**Cat.#:** N263319

**Product Name:** Anti-EPS15R Rabbit Monoclonal Antibody

**Synonyms:** EPS15R

**UNIPROT ID:** Q9UBC2

**Background:** Seems to be a constitutive component of clathrin-coated pits that is required for receptor-mediated endocytosis. Involved in endocytosis of integrin beta-1 (ITGB1) and transferrin receptor (TFR); internalization of ITGB1 as DAB2-dependent cargo but not TFR seems to require association with DAB2.

**Immunogen:** A synthetic peptide of human EPS15R

**Applications:** WB, ICC/IF

**Recommended Dilutions:** WB: 1/500-1/1000 IF: 1/50-1/200

**Host Species:** Rabbit

**Clonality:** Rabbit Monoclonal

**Clone ID:** R05-8A0

**MW:** Calculated MW: 94 kDa; Observed MW: 130 kDa

**Isotype:** IgG

**Purification:** Affinity Purified

**Species Reactivity:** Human

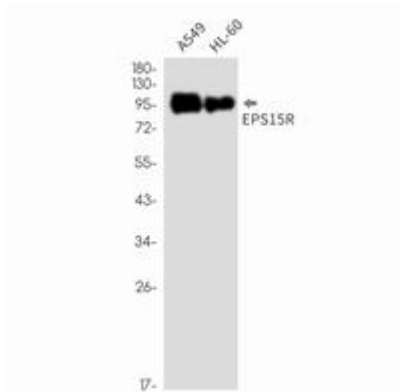
**Conjugation:** Unconjugated

**Modification:** Unmodified

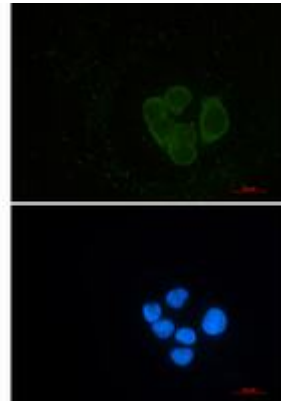
**Constituents:** PBS (without Mg<sup>2+</sup> and Ca<sup>2+</sup>), pH 7.3 containing 50% glycerol, 0.5% BSA and 0.02% sodium azide

**Research Areas:** Signal Transduction

**Storage & Shipping:** Store at -20°C. Avoid repeated freezing and thawing



Western blot analysis of EPS15R in A549, HL-60 lysates using EPS15R antibody.



Immunocytochemistry analysis of EPS15R (green) in Hela using EPS15R antibody, and DAPI (blue).