

## EPIGEN RABBIT PAB

**Cat.#:** N225129

**Product Name:** Anti-Epigen Rabbit pAb

**Synonyms:** EPGN; Epigen; Epithelial mitogen; EPG

**UNIPROT ID:** Q6UW88

**Background:** Promotes the growth of epithelial cells.

**Immunogen:** The antiserum was produced against synthesized peptide derived from the Internal region of human EPGN. AA range:11-60

**Applications:** WB,ELISA

**Recommended Dilutions:** WB: 1/500-1/1000 ELISA: 1/10000

**Host Species:** Rabbit

**Clonality:** Rabbit Polyclonal

**Clone ID:** -

**MW:** Calculated MW: 17 kDa; Observed MW: 17 kDa

**Isotype:** IgG

**Purification:** Affinity Purified

**Species Reactivity:** Human

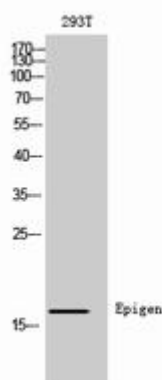
**Conjugation:** Unconjugated

**Modification:** Unmodified

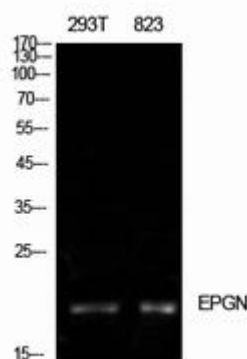
**Constituents:** PBS (without Mg<sup>2+</sup> and Ca<sup>2+</sup>), pH 7.3 containing 50% glycerol, 0.5% BSA and 0.02% sodium azide

**Research Areas:** Signal Transduction

**Storage & Shipping:** Store at -20°C. Avoid repeated freezing and thawing



Western blot analysis of Epigen in 293T lysates using Epigen antibody.



Western blot analysis of Epigen in 293T, 823 lysates using Epigen antibody.



# Product Description

Pioneering GTPase and Oncogene Product Development since 2010

---