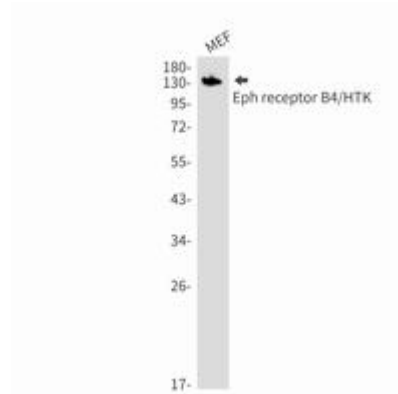
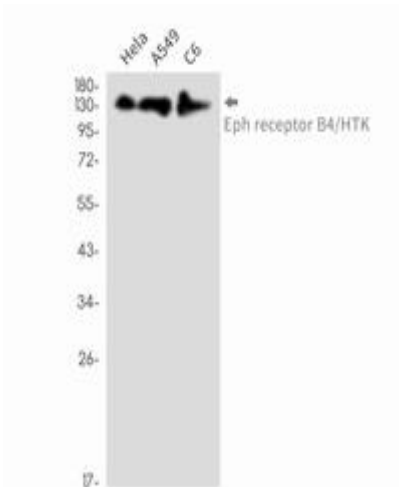


Immunohistochemistry analysis of paraffin-embedded Human breast cancer using Eph receptor B4/HTK antibody. High-pressure and temperature Sodium Citrate pH 6.0 was used for antigen retrieval.



Western blot analysis of Eph receptor B4/HTK in MEF lysates using Ephrin Receptor B4 antibody.



Western blot analysis of Eph receptor B4/HTK in HeLa, A549, C6 lysates using Eph receptor B4/HTK antibody.