

## EPHRIN RECEPTOR B1 RABBIT MAB

**Cat.#:** N263316

**Product Name:** Anti-Ephrin Receptor B1 Rabbit Monoclonal Antibody

**Synonyms:** EPHB1; ELK; EPHT2; HEK6; NET; Ephrin type-B receptor 1; ELK; EPH tyrosine kinase 2; EPH-like kinase 6; EK6; hEK6; Neuronally-expressed EPH-related tyrosine kinase; NET; Tyrosine-protein kinase receptor EPH-2

**UNIPROT ID:** P54762

**Background:** Receptor for members of the ephrin-B family. Binds to ephrin-B1, -B2 and -B3. Binding with the guidance cue ephrin-B2 at the optic chiasm midline redirect ventrotemporal (VT) retinal ganglion cells (RGCs) axons ipsilaterally. May be involved in cell-cell interactions in the nervous system.

**Immunogen:** A synthetic peptide of human Eph receptor B1/NET

**Applications:** WB,IP

**Recommended Dilutions:** WB: 1/500-1/1000 IP: 1/20

**Host Species:** Rabbit

**Clonality:** Rabbit Monoclonal

**Clone ID:** R03-7A7

**MW:** Calculated MW: 110 kDa; Observed MW: 135 kDa

**Isotype:** IgG

**Purification:** Affinity Purified

**Species Reactivity:** Human

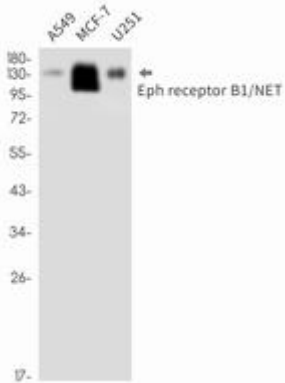
**Conjugation:** Unconjugated

**Modification:** Unmodified

**Constituents:** PBS (without Mg<sup>2+</sup> and Ca<sup>2+</sup>), pH 7.3 containing 50% glycerol, 0.5% BSA and 0.02% sodium azide

**Research Areas:** Neuroscience EPHrin Receptor

**Storage & Shipping:** Store at -20°C. Avoid repeated freezing and thawing



Western blot analysis of Eph receptor B1/NET in A549, MCF-7, U251 lysates using Ephrin Receptor B1 antibody.