

EPHA6 RABBIT PAB

Cat.#: S214116

Product Name: Anti-EPHA6 Rabbit Polyclonal Antibody

Synonyms: EHK2; EK12; EPA6; EHK-2; HEK12; PRO57066

UNIPROT ID: Q9UF33 (Gene Accession - NP_775926)

Background: Predicted to enable transmembrane-ephrin receptor activity. Predicted to be involved in axon guidance; positive regulation of kinase activity; and transmembrane receptor protein tyrosine kinase signaling pathway. Located in nucleoplasm. [provided by Alliance of Genome Resources, Apr 2022]

Immunogen: Synthetic peptide of human EPHA6

Applications: ELISA, IHC

Recommended Dilutions: IHC: 50-200; ELISA: 5000-10000

Host Species: Rabbit

Clonality: Rabbit Polyclonal

Isotype: Immunogen-specific rabbit IgG

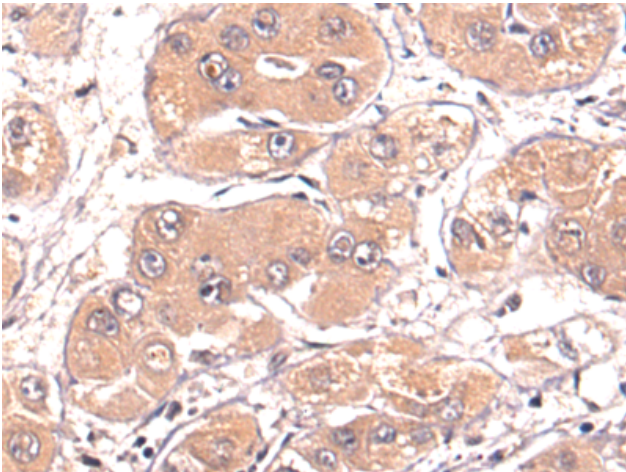
Purification: Antigen affinity purification

Species Reactivity: Human, Mouse, Rat

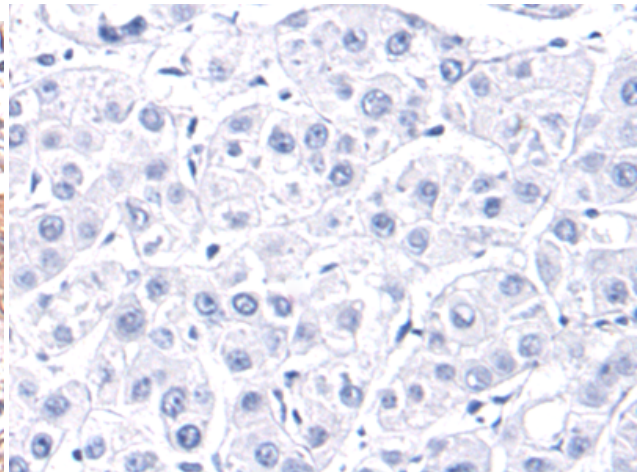
Constituents: PBS (without Mg²⁺ and Ca²⁺), pH 7.4, 150 mM NaCl, 0.05% Sodium Azide and 40% glycerol

Research Areas: Neuroscience, Cardiovascular

Storage & Shipping: Store at -20°C. Avoid repeated freezing and thawing



Immunohistochemistry analysis of paraffin embedded Human tonsil tissue using 214116(EPHA6 Antibody) at a dilution of 1/50(Nucleus).



In comparison with the IHC on the left, the same paraffin-embedded Human tonsil tissue is first treated with the synthetic peptide and then with 214116(Anti-EPHA6 Antibody) at dilution 1/50.