

EPCAM RABBIT PAB

Cat.#: S219325

Product Name: Anti-EPCAM Rabbit Polyclonal Antibody

Synonyms: ESA; KSA; M4S1; MK-1; DIAR5; EGP-2; EGP40; KS1/4; MIC18; TROP1; EGP314; HNPCC8; TACSTD1

UNIPROT ID: P16422 (Gene Accession - BC014785)

Background: This gene encodes a carcinoma-associated antigen and is a member of a family that includes at least two type I membrane proteins. This antigen is expressed on most normal epithelial cells and gastrointestinal carcinomas and functions as a homotypic calcium-independent cell adhesion molecule. The antigen is being used as a target for immunotherapy treatment of human carcinomas. Mutations in this gene result in congenital tufting enteropathy.

Immunogen: Fusion protein of human EPCAM

Applications: ELISA, WB, IHC

Recommended Dilutions: IHC: 50-200;WB: 1000-5000;ELISA: 5000-10000

Host Species: Rabbit

Clonality: Rabbit Polyclonal

Isotype: Immunogen-specific rabbit IgG

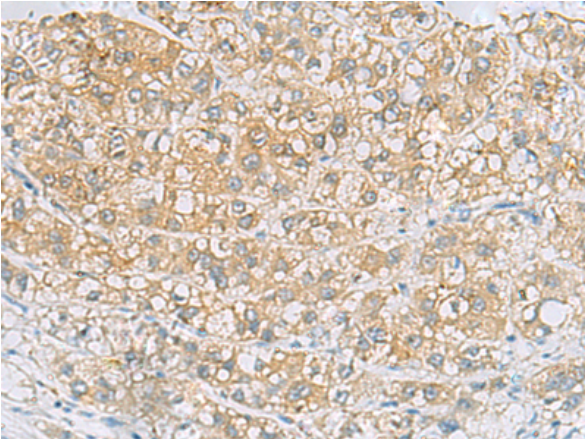
Purification: Antigen affinity purification

Species Reactivity: Human, Mouse, Rat

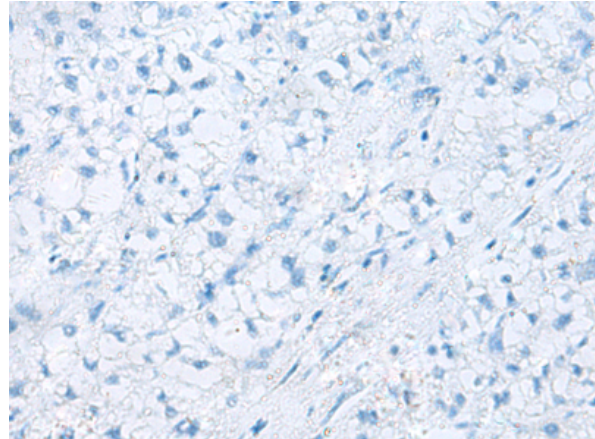
Constituents: PBS (without Mg²⁺ and Ca²⁺), pH 7.4, 150 mM NaCl, 0.05% Sodium Azide and 40% glycerol

Research Areas: Immunology

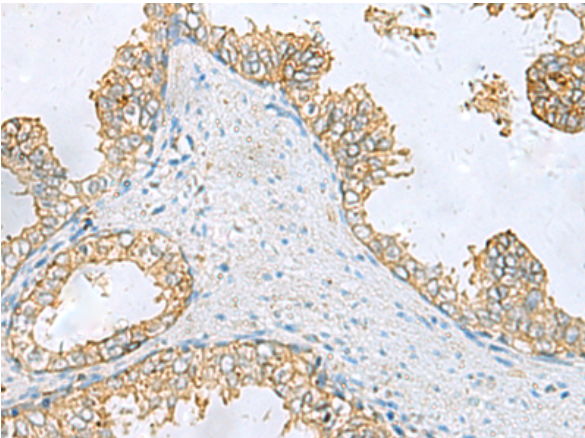
Storage & Shipping: Store at -20°C. Avoid repeated freezing and thawing



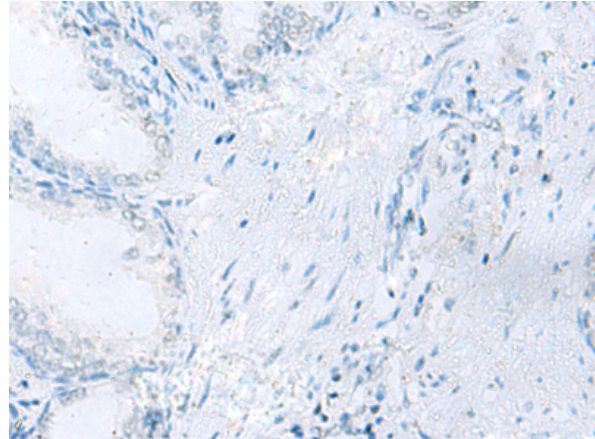
Immunohistochemistry analysis of paraffin embedded Human liver cancer tissue using 219325(EPCAM Antibody) at a dilution of 1/60 (Cell membrane).



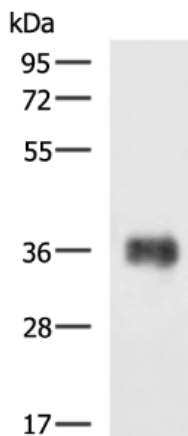
In comparison with the IHC on the left, the same paraffin-embedded Human liver cancer tissue is first treated with the fusion protein and then with 219325(Anti-EPCAM Antibody) at dilution 1/60.



The image on the left is immunohistochemistry of paraffin-embedded Human prostate cancer tissue using 219325(Anti-EPCAM Antibody) at a dilution of 1/60.



In comparison with the IHC on the left, the same paraffin-embedded Human prostate cancer tissue is first treated with fusion protein and then with D226394(Anti-EPCAM Antibody) at dilution 1/60.



Gel: 8%SDS-PAGE, Lysate: 40 µg;
 Lane: HT-29 cell lysate;
 Primary antibody: 219325(EPCAM Antibody) at dilution 1/900;
 Secondary antibody: HRP-conjugated Goat anti rabbit IgG at 1/5000 dilution;
 Exposure time: 30 seconds



Product Description

Pioneering GTPase and Oncogene Product Development since 2010
