

EPCAM (1D5) MOUSE MAB

Cat.#: N261399

Product Name: Anti-EpCAM (1D5) Mouse Monoclonal Antibody

Synonyms: EPCAM; GA733-2; MIS2; M4S1; MIC18; TACSTD1; TROP1; Epithelial cell adhesion molecule; Ep-CAM; Adenocarcinoma-associated antigen; Cell surface glycoprotein Trop-1; Epithelial cell surface antigen; Epithelial glycoprotein; EGP; Epithelial glycoprotein 314; EGP314; hEGP314; KS 1/4 antigen; KSA; Major gastrointestinal tumor-associated protein GA733-2; Tumor-associated calcium signal transducer 1; CD326

UNIPROT ID: P16422

Background: May act as a physical homophilic interaction molecule between intestinal epithelial cells (IECs) and intraepithelial lymphocytes (IELs) at the mucosal epithelium for providing immunological barrier as a first line of defense against mucosal infection. Plays a role in embryonic stem cells proliferation and differentiation. Up-regulates the expression of FABP5, MYC and cyclins A and E.

Immunogen: Purified recombinant EpCAM protein fragments expressed in E.coli.

Applications: WB,IP

Recommended Dilutions: WB: 1/500-1/1000 IP: 1/20

Host Species: Mouse

Clonality: Mouse Monoclonal

Clone ID: 1D5-B6-B10

MW: Calculated MW: 35 kDa; Observed MW: 39 kDa

Isotype: IgG1

Purification: Affinity Purified

Species Reactivity: Human

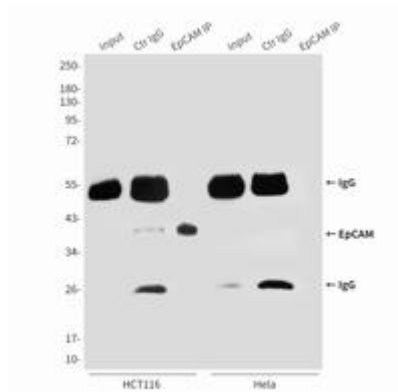
Conjugation: Unconjugated

Modification: Unmodified

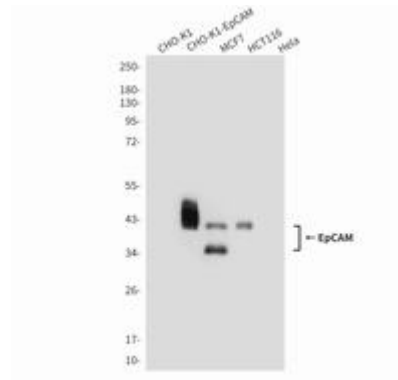
Constituents: PBS (without Mg²⁺ and Ca²⁺), pH 7.3 containing 50% glycerol, 0.5% BSA and 0.02% sodium azide

Research Areas: Tags & Cell Markers

Storage & Shipping: Store at -20°C. Avoid repeated freezing and thawing



Immunoprecipitation analysis of EpCAM (1D5) in HCT116 and HeLa lysates using EpCAM antibody.



Western blot analysis of EpCAM (1D5) in CHOKCHO-K1 transfected by FlagEpCAM, MCF-7 (EpCAM positive), HCT116 (EpCAM positive), and HeLa (EpCAM negative) lysates using EpCAM (1D5) antibody.