

ENPP6 RABBIT PAB

Cat.#: S216491

Product Name: Anti-ENPP6 Rabbit Polyclonal Antibody

Synonyms: NPP6

UNIPROT ID: Q6UWR7 (Gene Accession - BC035035)

Background: Choline-specific glycerophosphodiester phosphodiesterase. Hydrolyzes lysophosphatidylcholine (LPC) to form monoacylglycerol and phosphorylcholine but not lysophosphatidic acid, showing it has a lysophospholipase C activity. Has a preference for LPC with short (12:0 and 14:0) or polyunsaturated (18:2 and 20:4) fatty acids. Also hydrolyzes glycerophosphorylcholine and sphingosylphosphorylcholine efficiently. Hydrolyzes the classical substrate for phospholipase C, p-nitrophenyl phosphorylcholine in vitro, while it does not hydrolyze the classical nucleotide phosphodiesterase substrate, p-nitrophenyl thymidine 5'-monophosphate. Does not hydrolyze diacyl phospholipids such as phosphatidylethanolamine, phosphatidylinositol, phosphatidylserine, phosphatidylglycerol and phosphatidic acid.

Immunogen: Fusion protein of human ENPP6

Applications: ELISA, IHC

Recommended Dilutions: IHC: Oct-50; ELISA: 1000-2000

Host Species: Rabbit

Clonality: Rabbit Polyclonal

Isotype: Immunogen-specific rabbit IgG

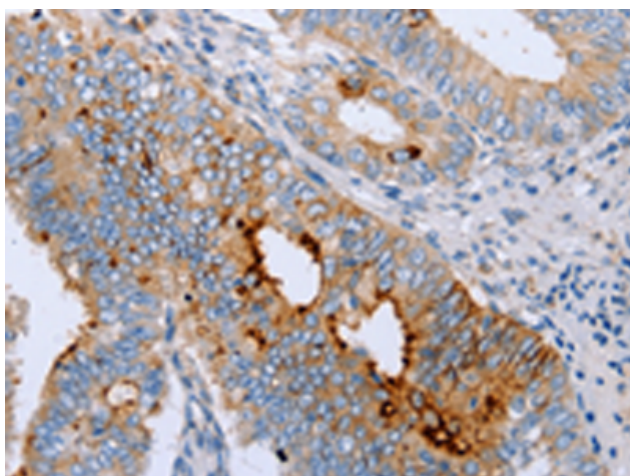
Purification: Antigen affinity purification

Species Reactivity: Human, Mouse, Rat

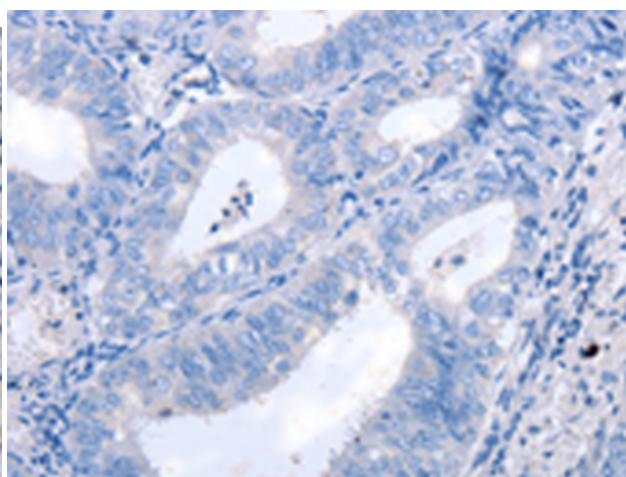
Constituents: PBS (without Mg²⁺ and Ca²⁺), pH 7.4, 150 mM NaCl, 0.05% Sodium Azide and 40% glycerol

Research Areas: Metabolism

Storage & Shipping: Store at -20°C. Avoid repeated freezing and thawing



Immunohistochemistry analysis of paraffin embedded Human cervical cancer tissue using 216491(ENPP6 Antibody) at a dilution of 1/15(Cytoplasm, Cell membrane).



In comparison with the IHC on the left, the same paraffin-embedded Human cervical cancer tissue is first treated with the fusion protein and then with 216491(Anti-ENPP6 Antibody) at dilution 1/15.



Product Description

Pioneering GTPase and Oncogene Product Development since 2010
