

ENPP5 RABBIT PAB

Cat.#: S216490

Product Name: Anti-ENPP5 Rabbit Polyclonal Antibody

Synonyms: NPP-5

UNIPROT ID: Q9UJA9 (Gene Accession - BC027615)

Background: ENPP5 is a single-pass membrane protein that belongs to the nucleotide pyrophosphatase/phosphodiesterase family. It may play a role in neuronal cell communication, and it lacks nucleotide pyrophosphatase and lysopholipase D activity.

Immunogen: Fusion protein of human ENPP5

Applications: ELISA, IHC

Recommended Dilutions: IHC: 100-300; ELISA: 2000-10000

Host Species: Rabbit

Clonality: Rabbit Polyclonal

Isotype: Immunogen-specific rabbit IgG

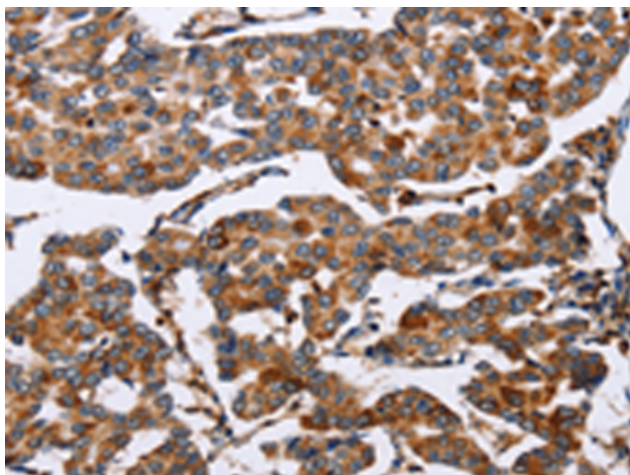
Purification: Antigen affinity purification

Species Reactivity: Human, Mouse, Rat

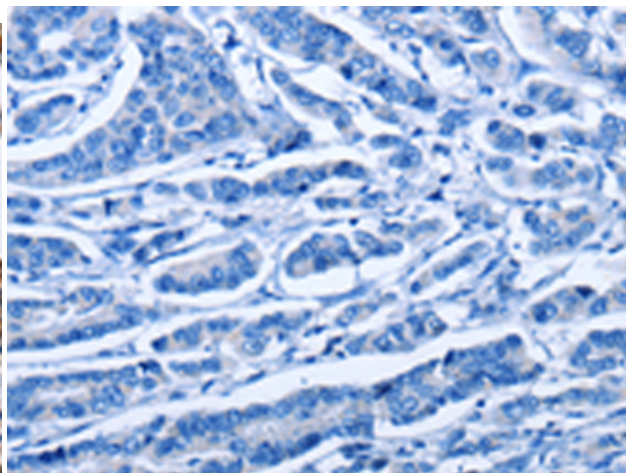
Constituents: PBS (without Mg²⁺ and Ca²⁺), pH 7.4, 150 mM NaCl, 0.05% Sodium Azide and 40% glycerol

Research Areas: Neuroscience

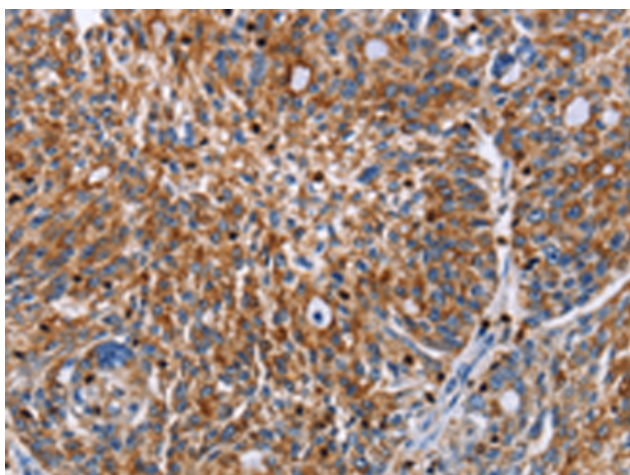
Storage & Shipping: Store at -20°C. Avoid repeated freezing and thawing



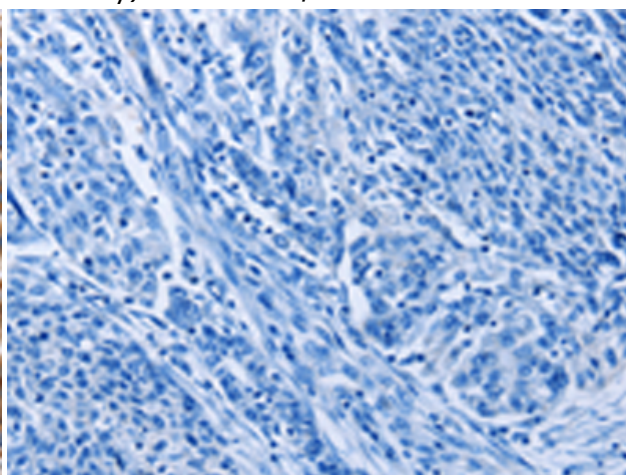
Immunohistochemistry analysis of paraffin embedded Human breast cancer tissue using 216490(ENPP5 Antibody) at a dilution of 1/60(Cytoplasm).



In comparison with the IHC on the left, the same paraffin-embedded Human breast cancer tissue is first treated with the fusion protein and then with 216490(Anti-ENPP5 Antibody) at dilution 1/60.



The image on the left is immunohistochemistry of paraffin-embedded Human ovarian cancer tissue using 216490(Anti-ENPP5 Antibody) at a dilution of 1/60.



In comparison with the IHC on the left, the same paraffin-embedded Human ovarian cancer tissue is first treated with fusion protein and then with D220593(Anti-ENPP5 Antibody) at dilution 1/60.