

## ENPP2 RABBIT PAB

**Cat.#:** N225181

**Product Name:** Anti-ENPP2 Rabbit pAb

**Synonyms:** ENPP2; ATX; PDNP2; Ectonucleotide pyrophosphatase/phosphodiesterase family member 2; E-NPP 2; Autotaxin; Extracellular lysophospholipase D; LysoPLD

**UNIPROT ID:** Q13822

**Background:** Hydrolyzes lysophospholipids to produce the signaling molecule lysophosphatidic acid (LPA) in extracellular fluids.

**Immunogen:** The antiserum was produced against synthesized peptide derived from the Internal region of human ENPP2. AA range:401-450

**Applications:** WB,ELISA

**Recommended Dilutions:** WB: 1/500-1/1000 ELISA: 1/10000

**Host Species:** Rabbit

**Clonality:** Rabbit Polyclonal

**Clone ID:** -

**MW:** Calculated MW: 99 kDa; Observed MW: 99 kDa

**Isotype:** IgG

**Purification:** Affinity Purified

**Species Reactivity:** Human,Mouse,Rat

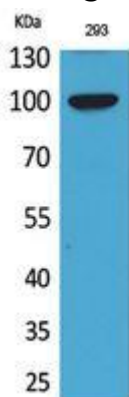
**Conjugation:** Unconjugated

**Modification:** Unmodified

**Constituents:** PBS (without Mg<sup>2+</sup> and Ca<sup>2+</sup>), pH 7.3 containing 50% glycerol, 0.5% BSA and 0.02% sodium azide

**Research Areas:** Cancer

**Storage & Shipping:** Store at -20°C. Avoid repeated freezing and thawing



Western blot analysis of ENPP2 in 293 lysates using ENPP2 antibody.



# Product Description

Pioneering GTPase and Oncogene Product Development since 2010

---