

ENPEP RABBIT PAB

Cat.#: S221622

Product Name: Anti-ENPEP Rabbit Polyclonal Antibody

Synonyms: APA; CD249; gp160

UNIPROT ID: Q07075 (Gene Accession - NP_001968)

Background: Appears to have a role in the catabolic pathway of the renin-angiotensin system. Probably plays a role in regulating growth and differentiation of early B-lineage cells.

Immunogen: Synthetic peptide of human ENPEP

Applications: ELISA, IHC

Recommended Dilutions: IHC: 50-300; ELISA: 5000-10000

Host Species: Rabbit

Clonality: Rabbit Polyclonal

Isotype: Immunogen-specific rabbit IgG

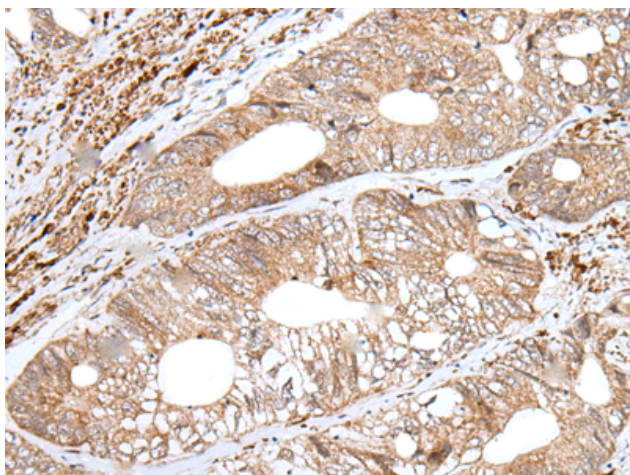
Purification: Antigen affinity purification

Species Reactivity: Human, Mouse, Rat

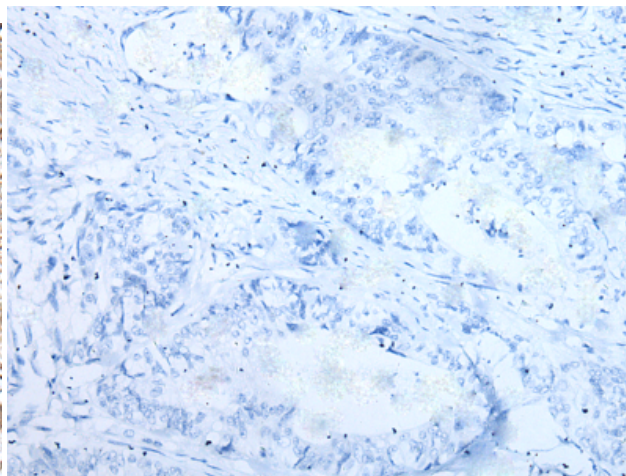
Constituents: PBS (without Mg²⁺ and Ca²⁺), pH 7.4, 150 mM NaCl, 0.05% Sodium Azide and 40% glycerol

Research Areas: Immunology, Stem Cells

Storage & Shipping: Store at -20°C. Avoid repeated freezing and thawing



Immunohistochemistry analysis of paraffin embedded Human colorectal cancer tissue using 221622(ENPEP Antibody) at a dilution of 1/65(Cell membrane).



In comparison with the IHC on the left, the same paraffin-embedded Human colorectal cancer tissue is first treated with the synthetic peptide and then with 221622(Anti-ENPEP Antibody) at dilution 1/65.