

ENKD1 RABBIT PAB

Cat.#: S219343

Product Name: Anti-ENKD1 Rabbit Polyclonal Antibody

Synonyms: C16orf48; DAKV6410

UNIPROT ID: Q9H0I2 (Gene Accession - BC008284)

Background: The exact function of ENKD1 remains unknown.

Immunogen: Fusion protein of human ENKD1

Applications: ELISA, WB, IHC

Recommended Dilutions: IHC: 50-200;WB: 500-2000;ELISA: 5000-10000

Host Species: Rabbit

Clonality: Rabbit Polyclonal

Isotype: Immunogen-specific rabbit IgG

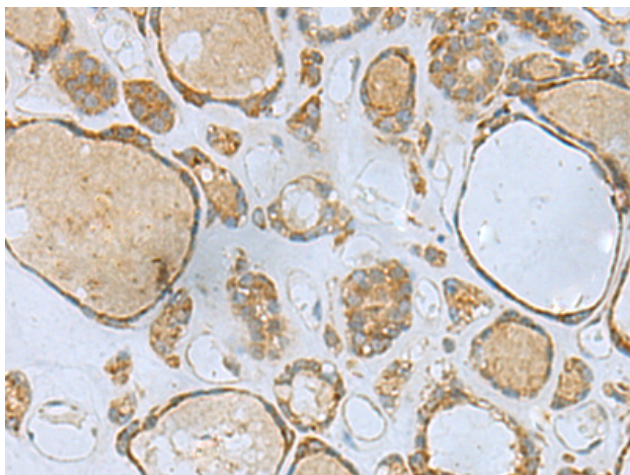
Purification: Antigen affinity purification

Species Reactivity: Human, Mouse

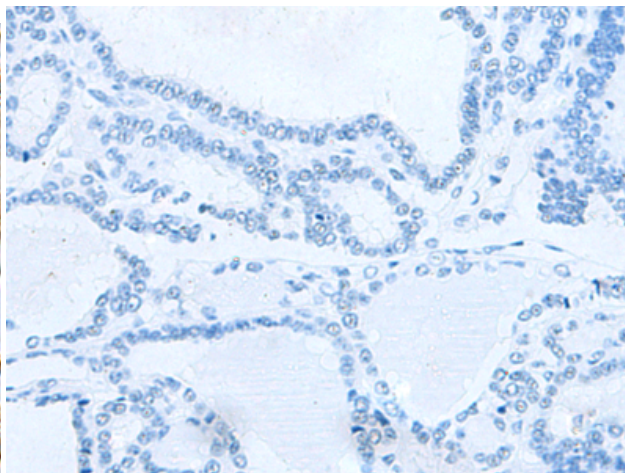
Constituents: PBS (without Mg²⁺ and Ca²⁺), pH 7.4, 150 mM NaCl, 0.05% Sodium Azide and 40% glycerol

Research Areas: Signal Transduction, Cell Biology

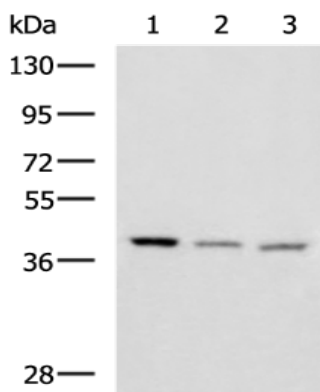
Storage & Shipping: Store at -20°C. Avoid repeated freezing and thawing



Immunohistochemistry analysis of paraffin embedded Human thyroid cancer tissue using 219343(ENKD1 Antibody) at a dilution of 1/80(Cytoplasm).



In comparison with the IHC on the left, the same paraffin-embedded Human thyroid cancer tissue is first treated with the fusion protein and then with 219343(Anti-ENKD1 Antibody) at dilution 1/80.



Gel: 8%SDS-PAGE, Lysate: 40 µg;
 Lane 1-3: Human cerebrum tissue, Human cerebella tissue, Mouse brain tissue lysates;
 Primary antibody: 219343(ENKD1 Antibody) at dilution 1/1150;
 Secondary antibody: HRP-conjugated Goat anti rabbit IgG at 1/5000 dilution;
 Exposure time: 3 minutes