

ENA 78 RABBIT PAB

Cat.#: N225142

Product Name: Anti-ENA 78 Rabbit pAb

Synonyms: AMCFII; Cxcl5; ENA78; SCYB5

UNIPROT ID: P42830

Background: Involved in neutrophil activation. In vitro, ENA-78(8-78) and ENA-78(9-78) show a threefold higher chemotactic activity for neutrophil granulocytes.

Immunogen: Synthetic peptide from human protein at AA range: 65-114

Applications: IHC-P,ELISA

Recommended Dilutions: IHC: 1/50-1/100 ELISA: 1/10000

Host Species: Rabbit

Clonality: Rabbit Polyclonal

Clone ID: -

MW: -

Isotype: IgG

Purification: Affinity Purified

Species Reactivity: Human

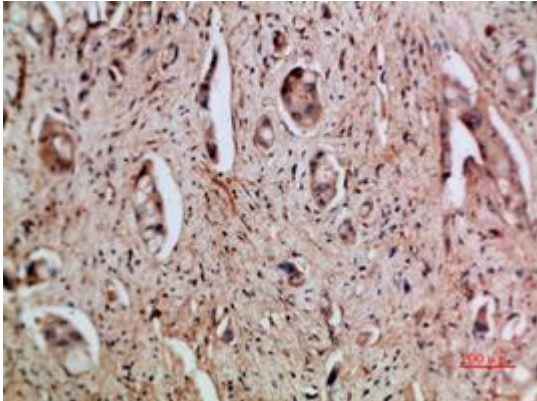
Conjugation: Unconjugated

Modification: Unmodified

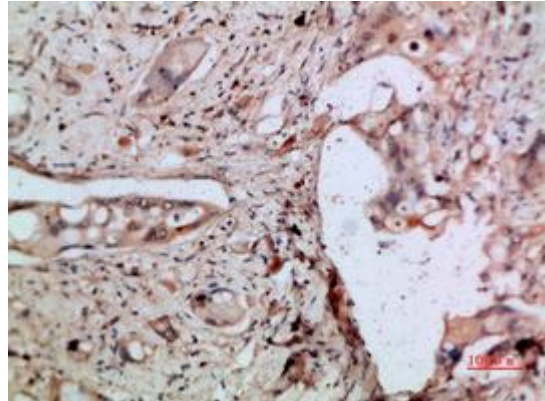
Constituents: PBS (without Mg²⁺ and Ca²⁺), pH 7.3 containing 50% glycerol, 0.5% BSA and 0.02% sodium azide

Research Areas: Immunology

Storage & Shipping: Store at -20°C. Avoid repeated freezing and thawing



Immunohistochemical analysis of paraffin-embedded Human tonsils using ENA 78 antibody. High-pressure and temperature Sodium Citrate pH 6.0 was used for antigen retrieval.



Immunohistochemistry analysis of paraffin-embedded Human pancreatic cancer using ENA 78 antibody. High-pressure and temperature Sodium Citrate pH 6.0 was used for antigen retrieval.